



Roadmaster 06

Flailmower





EC Declaration of conformity for machines

Manufacturer: Votex B.V.
Adresse : Groen 2
Code postal : 6666 LP
Town: HETEREN (Netherlands)

declare that the following machines

Votex Roadmaster 06 types : 1506(RA) 1906(RA) 2306(RA) 2606 and 3006
nr.....

- meets the requirements of the directive

Directive 98-37-EC

and the national legislation concerning the execution of this directive

- meets the requirements of further EEC directives (only fill in if applicable)

and further declare that ;

the following (parts of) harmonised norms have been applied

- EN 292-1 1994 / EN 292-2 1996
- EN 745 1999

Heteren

A handwritten signature in black ink, appearing to be "P. Krieckaert", written over a horizontal line.

.....
(signature)

P.Krieckaert
General Manager.

SAFETY !

DANGER ! If you see this safety signal and title, there is an direct danger for life and health of people and animals.

ATTENTION !

This title warns for eventual damage to the product if the user does not follow up the instructions of the manufacturer.

NOTE !

Gives the user suggestions/advises to perform some tasks more easier and safer.

SAFETY INSTRUCTIONS.

1. We recommend you to read this manual thoroughly, in such a way that you will be premeditated on situations which might cause danger !
Especially make yourselves familiar how to use and especially about the way how to stop the tractor in case of an emergency !
Pass on all safety advises etc. also to the other (fellow) users !
2. Never let the blades shaft rotate when the machine does not rest over the entire length of the ground !
3. The exhaust fumes of the combustion-engines contain carbon monoxide, a scentless and deadly poison. Therefor the engine of the tractor may never be switched-on in a enclosed area !
4. Take beside the specific instructions in this manual also the general prescriptions into account regarding safety and accident prevention !
5. The plates/pictogramms on the machine show important information for a safe operation. Following up of this information is for your own safety !
Injured plates/pictogramms have to be replaced immediately !
6. At a noise level higher than 85 dB(A) always use ear protection, however not when driving on the main road !
7. The operator has to wear as much as possible close fitting clothes !
8. Adhere the applicable traffic rules when you use the main road !
9. Tractor with the attached mower may only be driven by qualified persons with enough experience !
10. Adhere the maximum permissible transport dimensions !
11. Attach, if necessary, light screens and/or warning shields !

12. Before road transport bring the machine in its destinated position, if available, and secure it !
13. Whenever driving on the road with a lifted machine the operating handle of the lever mechanism has to be secured against lowering !
14. Check both the mower and tractor before every operation on safety regarding performance and traffic !
15. Never take passengers with you on the tractor or mower despite their age !
16. If necessary, attach front weights in accordance with the mounting instructions, at the fixing points provided for this purpose.
Adhere the maximum permissible axle load/total weight and the minimum permissible front axle load (according the traffic rules) !
17. Hoses, cables etc. for the rams and lightning have to be fitted in such a way, that during all working conditions they cannot be damaged or cause unexpected movements nor interrupt their function !
18. Pay attention at curves with the large width/length (turning circle) and large weight (inertia mass) of the machine !
19. Check the area around tractor and mower before starting to drive and/or before putting the mower into operation. Ensure sufficient visibility !
When driving, the driver seat has always to be occupied !
20. It is not allowed to stay in the work or danger area of the machine !

DANGER ! KEEP DISTANCE, OBJECTS (STONES ETC.) CAN BE THROWN AWAY !

21. Only work with the machine when it is complete and all protection in good shape !
22. Adapt your speed to the local conditions of the yard and work !
23. Working with the tractor on slopes is very dangerous !
However if you cannot avoid to work with the tractor on a slope you have to this very carefully and avoid sudden curves !
24. Only work during daylight or with very good artificial light !
25. Prior to start working remove all objects from the field which might be caught or thrown away by the mower !
26. Check immediately the mower after hitting an object, eventual damages have to be repaired before restarting the operation !
27. Immediately repair damages before restart to operate !
28. For transport or working position of the rotaru cutter the PTO shaft has to be switched off and the blades really stand still !

29. Prior to leaving the tractor unguarded and/or performance of repairs on the mower or PTO drive shaft following precautionary measures have to be followed up;
- switch-off the PTO shaft,
 - put the gearshift of the tractor on neutral position,
 - put the tractor on the parking-brake, and completely lower the machine,
 - switch off the tractor engine and remove the keys from the ignition key
 - always wait until the blades really stand still !

DANGER ! MACHINE SLOWLY STOPS ROTATING! DO NOT STAY NEAR THE ROTATIVE PARTS OF THE MACHINE UNLESS THE MACHINE REALLY STAND STILL !

30. Ensure that the jack/wheel support (if mounted) is in its lowest blocked position when the mower has to be attached or disconnected !
31. Special attention should be reconsidered during attachment or disconnection of the mower at or from the tractor !

PTO drive shaft.

32. Only use the PTO drive shaft prescribed by the manufacturer !
33. Guard tubes and guard shields on the PTO drive shaft, as well as the guard shields on tractor and mower always have to be in very good condition !
34. Ensure the prescribed overlap of the PTO drive parts and guard tubes as well in transport as working position (see the instruction manual of the PTO drive shaft manufacturer) !
35. Attachment and disconnection of the PTO drive shaft is only allowed when the engine of the tractor stands still and the ignition key has been removed !
36. Ensure correct attachment and blocking of the PTO drive shaft !
37. Lock the PTO drive shaft against spinning by attaching both chains on tractor and machine onto a fix point !
38. Ensure before switching on the PTO shaft, that the number of rotation and sense of rotation of the PTO shaft is in accordance with the machine to be driven. The number of rotation and sense of rotation are indicated on the machine by a pictogramm !
39. Not exceed the indicated number of rotations !
40. Never switch on the PTO shaft when the engine stands still !
41. Keep distance from the rotating PTO shaft/PTO drive shaft !
42. Always switch off the PTO shaft when the universal angles of the PTO drive shaft become too large !
43. Place the disconnected PTO drive shaft in its support on the 3-points frame !
44. Attach the guard bush on the PTO shaft of the tractor the moment the PTO drive shaft is disconnected !

Hydraulics (if mounted).

45. A hydraulic system works under high pressure. When noted a leakage, immediately put the system pressureless, collect leaking oil and replace defective parts !

DANGER ! FLUID UNDER HIGH PRESSURE EASILY PENETRATES SKIN AND CLOTHES AND CAUSE SERIOUS INJURIES. IN THIS CASE IMMEDIATELY CONSULT A DOCTOR !

LEAKING OIL CAN CAUSE DAMAGE TO THE ENVIRONMENTAL. TAKE NECESSARY MEASURES TO AVOID THIS !

46. Regularly check hydraulic hoses, lines and linkings, replace them when damaged or ageing. New hoses have to be in accordance with the technical demands of the manufacturer !
47. Prior to attachment, disconnection and repairs, ensure that the hydraulic system of the tractor and machine are pressureless and the ignition key removed !
48. Mount on the disconnected hydraulic hoses dust shields and place the hoses in such a way that damage and pollution is excluded !

Maintenance and inspection

DANGER ! MAINTENANCE AND INSPECTION ON THE BOTTOM OF THE MACHINE MAY NEVER BE PERFORMED WHEN THE MACHINE IS ONLY CARRIED BY THE THREE POINT LINKAGE OF THE TRACTOR !
ALWAYS TAKE SPECIAL PRECAUTIONS AGAINST UNEXPECTED FALLING OF THE MACHINE (USE A TACKLE WITH A MINIMAL BEARING CAPACITY OF ACCORDING THE WEIGHT INDICATED ON THE SHIELD OF YOUR MACHINE !

ATTENTION !

VIBRATIONS IN THE MACHINES IS MOSTLY CAUSED BY IMBALANCE OF THE BLADES. THESE VIBRATIONS COULD CAUSE BIG DAMAGE OF THE MACHINE. THEREFORE WHEN DURING OPERATION MORE VIBRATIONS AND OR A CHANGE IN THE NOISE OF THE MACHINE IS NOTICED, STOP IMMEDIATELY, FIND ITS CAUSE AND REPAIR IT BEFORE RESTART TO OPERATE !

49. Check regularly the worn and condition of the blades;
 - at both sides the blades have to be worn out the same way,
 - replace immediately twisted blades !
50. If swinging mowing- / or swinging chopping blades are fitted;
 - check regularly the bolt connections with which these blades are fitted onto the blade support ! When loosening the lock nut, always fasten a new lock nut,
 - check regularly the worn and condition of the blade sleeves, connection holes of the swinging mowing- / or swinging chopping blades and of the blade supports !
51. If saucer assy. are fitted the worn and condition of these saucer assy. has to be checked regularly !
52. Check regularly the condition of the guard and replace it if necessary !
53. Only persons who are acquainted with the machine and possible danger may operate the machine !
54. All performances on the machine may only be done with proper tools !

LIABILITY AND WARRANTY.

Vogelenzang Andelst B.V. guarantees correct operation of the mower for a period of 12 (twelve) months, provided all instructions of according this manual have been followed up.

1. Mower may only be operated by persons who have thoroughly read this manual and who are well aware of the danger which may occur if these instructions have not been followed up.
The above applies also to the persons responsible for adjustment and maintenance of the mower.
2. Mower may only be used for the purposes designed for.
3. All safety instructions have to be taken carefully into account.
4. Only original Votex spare parts and prescribed grease type may be used.
5. Local regulations regarding accident prevention, transport security and traffic rules have to be strictly followed up.

6 **IMPORTANT;**

This instruction manual applies to the original Votex technical execution. Therefore Vogelenzang Andelst B.V. cannot be held responsible for any damages whatsoever caused by unauthorized technical modification of the mower or use of other than Votex spare parts.
The same applies to use of other grease waists, incorrect or insufficient maintenance and wrong performed repairs, without preliminary consult with Vogelenzang Andelst B.V.

7 **WE DRAW YOUR ATTENTION TO THE FACT THAT;**

Vogelenzang Andelst B.V. when instructions of this manual have not been followed up, cannot accept any warranty claim during the warranty period.

8. Vogelenzang Andelst B.V. plies to the general delivery and payment conditions of the Metaalunie (metal union). These are filed at the Griffie van de Rechtbank, Rotterdam (office of the clerk for the court of justice in Rotterdam). In this are resumed the Algemene Handelsvoorwaarden Landbouwwerktuigen en Landbouwwitrustingen - A.H.L. (General trade conditions for agricultural implements and agricultural equipment).

13. REMARKS.

ALL RIGHTS RESERVED.

Without preliminary, explicit permission of Vogelenzang Andelst B.V. its is NOT allowed to duplicate and/or make public by print, photocopy, microfilm or in whatsoever other way the contents of this manual.

Same applies to the belonging illustrations and diagrams.

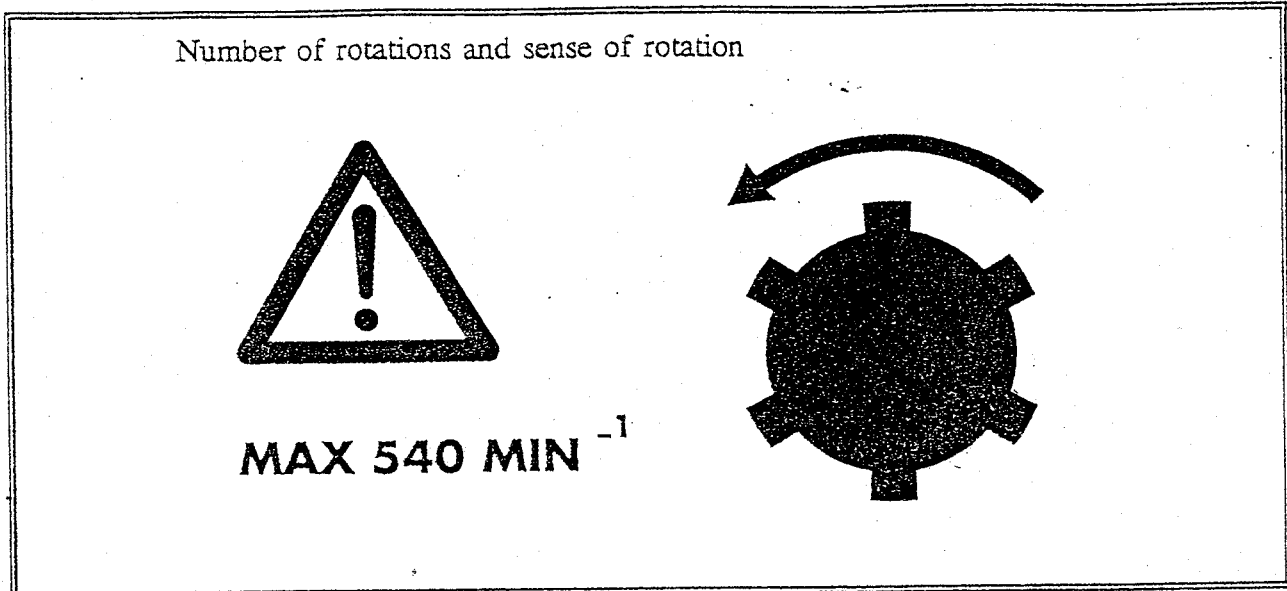
Vogelenzang Andelst B.V. reserves the right to modify its spare parts, if necessary, at any time without previous notice to its customers.

Also the contents of this manual could be adapted accordingly without prior notice.

For more specific information about adjustment, maintenance and repair, not prescribed for in this manual, we suggest you to contact the technical department of your dealer.

PUTTING INTO OPERATION OF THE MOWER.

Before coupling the mower check if the details indicated on the machine regarding sense of rotation and number of rotation are in accordance with the sense of rotation and number of rotations of the PTO shaft of the tractor



ATTENTION !

**MODIFICATION OF NUMBER OF ROTATIONS/SENSE OF ROTATION
MAY ONLY BE DONE BY THE DEALER/MANUFACTURER.**

5.1. ATTACHMENT OF THE MOWER.

The Votex RM-06 flail mower can be hitched onto tractors with a lever mechanism of Cat II

Hitching has to be done as follows;

- place the tractor in such a way in front of the mower that the tie rods can be attached onto the mower,
- put the tractor on parking brake and put the gearshift in neutral position,

**DANGER ! DURING OPERATION OF THE LEVER MECHANISM KEEP
AWAY FROM THE LEVER AREA OF THE THREE POINTS
LINKAGE !**

- assemble both tie rods onto the machine with help of the lever arm pins and mount the lock nuts,

ATTENTION !

THE LENGTH OF THE PTO DRIVE SHAFT MAY NOT BE TOO LONG. TO DEFINITE THE CORRECT LENGTH YOU HAVE TO TAKE INTO ACCOUNT LIFTING AND SWIVELING OF THE MACHINE AND TURNING IN AND OUT OF THE LINK.

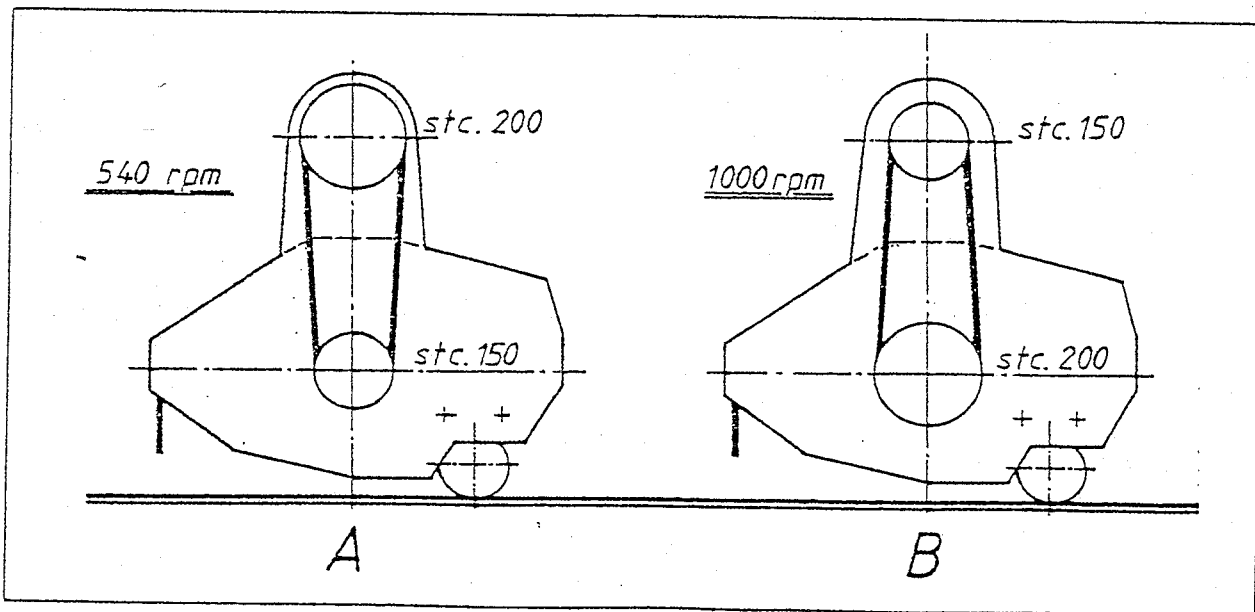
FOR ASSEMBLY, SHORTENING AND MAINTENANCE WE REFER TO THE INSTRUCTION MANUAL OF THE PTO DRIVE SHAFT MANUFACTURER !

MODIFICATION OF NUMBER OF ROTATIONS OF THE PTO DRIVE SHAFT, FROM 540 RPM INTO 1,000 RPM OR V.V..

Underneath activities may only be performed by the manufacturer or dealer !

The mower can modified from 540 to 1000 RPM, or v.v., by interchanging both V-belt pulleys

In both cases the number of rotations of the rotor shaft will turn the required number of rotations being 1,870 RPM.



NUMBER OF ROTATIONS OF THE PTO SHAFT,

ATTENTION !

THE NUMBER OF ROTATIONS INDICATED ON THE MACHINE SHOULD NEVER BE EXCEEDED !

The number of rotations indicated on the machine is equivalent to the number of rotations of the rotor shaft, being approx. 1,900 RPM, with which you will achieve the best mowing result.

TRANSPORT OF THE MOWER ATTACHED ONTO THE TRACTOR

Transport has to be done only with pulled up and locked cutting head, with standing still rotor shaft and with the ram for offset positioning in complete pulled-in position. Ground space under the machine approx. 50 cm.

ADJUSTMENT OF THE CUTTING HEIGHT.

The cutting height of the Votex RM-06 flail mower can be adjusted roughly with its roller.

A more precise adjustment can be achieved by in- or out screwing of the link pin.

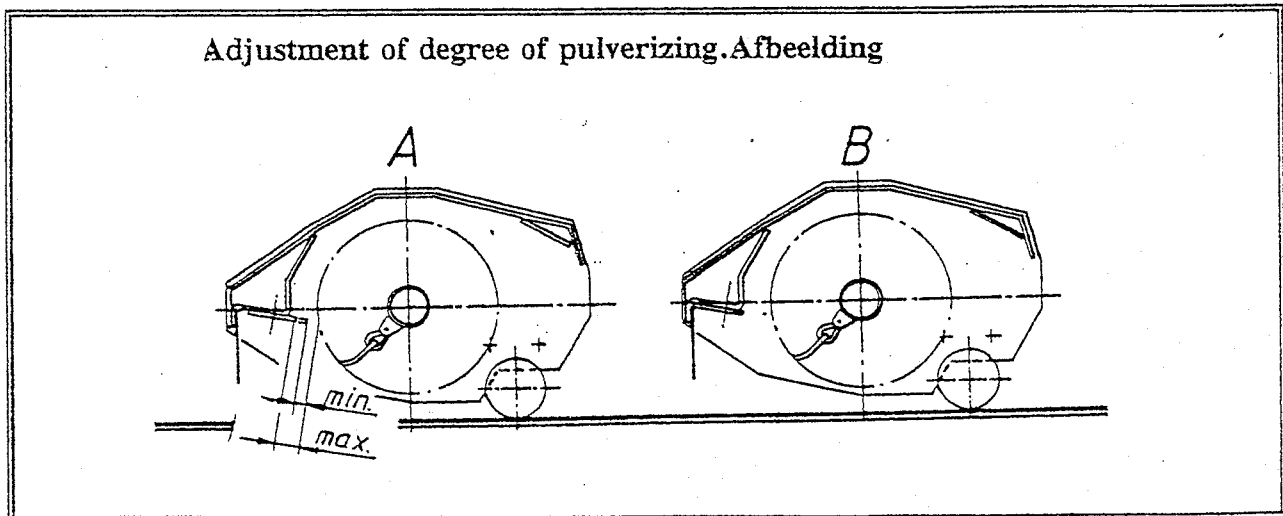
ADJUSTMENT OF THE DEGREE OF PULVERIZING.

The degree of pulverizing can be adapted by placing the movable chopping plate under the cutting head nearer or farther the rotor shaft

The nearer the plate is mounted to the rotor shaft, the shorter the crop will be pulverized.

If only a little pulverizing is required, it is possible to mount the chopping plate reversely.

This way the chopping blade will be completely in the shadow of the reinforcement profile under the cutting head



VIBRATIONS OF THE MOWER.

When during operation an increase of vibrations or change of noise is noticed immediately stop the work, check its cause and repair it before restarting to operate.

UNCOUPLING.

ATTENTION !

PLACE THE MOWER ON A HORIZONTAL SOLID UNDERGROUND WITH A MINIMAL PORTATIVE POWER OF 400 kPA (APPROX 4 KG/CM²) !

- Put the tractor on the parking-brake and put the gearshift in neutral position,
- place the cylinder for lateral movement in its shortest position,
- place the cutting head in vertical position and lock it,
- place the jack in its lowest position and lock it,
- base the machine on the ground,
- switch off the tractor engine and remove the ignition key,
- make the hydraulic system pressureless by moving several times the handles on the tractor to operate the sliding cylinder,

DANGER ! BE AWARE OF RESIDUAL PRESSURE AND COLLECT DURING UNCOUPLING OF THE HYDRAULIC HOSES THE LEAK OIL !

- uncouple the hydraulic hoses and assemble the dust shields,
- disassemble at the tractor side the PTO drive shaft and place it in the bracket provided for that purpose,
- remove the link pins and lever arm pins,
- remove, if mounted, the plug of the lighting.

MAINTENANCE OF THE MOWER.

DANGER ! INSPECTION AND MAINTENANCE MAY ONLY BE DONE IF;

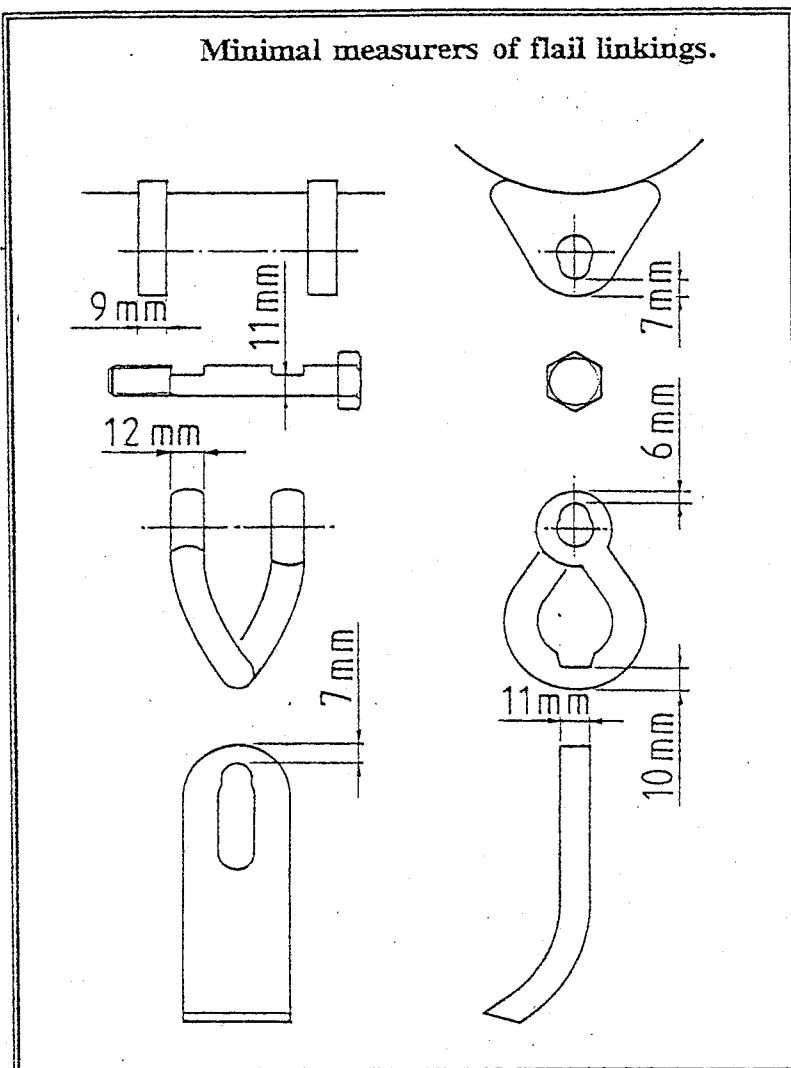
- the PTO shaft of the tractor is switched off,
- the lever mechanism of the tractor is placed in its lowest position,
- the tractor engine has been switched off,
- the ignition key has been removed,
- the hydraulic system is pressureless.

FLAILS, FLAIL BRACKETS, BOLTS AND LINKINGS.

Flails, brackets, bolts and linking plates on the rotor shaft have to be checked regularly on worn wastage.

DANGER ! NEVER WORK WITH FLAILS, BOLTS AND LINKING PLATES WHICH DO NOT COMPLY WITH THE INDICATED MINIMAL MEASUREMENTS ACCORDING FIG.

Replace immediately all parts not in accordance with these minimal measures !



Torque value of the flail linking nut: 80 Nm.

Worn out flails diminuate the mowing quality.

Replace in this case all flails and, if necessary the brackets and bolts. If you replace only the most worn out flails, the rotor shaft gets out of balance, which cause vibrations which could destroy your machine within short time.

Vibrations could not only indicate on one or more (extremely) damaged flails and/or brackets but also to objects around the rotor shaft (f.i. barbed wire).

When noting vibrations or a change of noise of the machine, switch off immediately the PTO shaft, check its cause and repair it.

NOTE ! EXTREMELY WASTAGE OF FLAILS, FLAIL BRACKETS, BOLTS AND FASTENINGS PLATES ON THE ROTOR SHAFT COULD BE CAUSED BY A TOO LOW NUMBER OF ROTATIONS OF THE ROTOR SHAFT AND/OR BY SEVERE GROUND CONTACT OF THE FLAILS !

When one or more flails and/or flail brackets are (extremely) damaged, replace them by flails/ flail brackets which are worn out precisely as the remaining flails, flail brackets on the rotor shaft.

If, after above action the vibrations still remain this could indicate on a banded rotor shaft. If so immediately contact your dealer. Never try to repair the rotor shaft yourself.

PROTECTION.

Check regularly the condition of the protection. Replace immediately damaged/worn out rubber flaps !

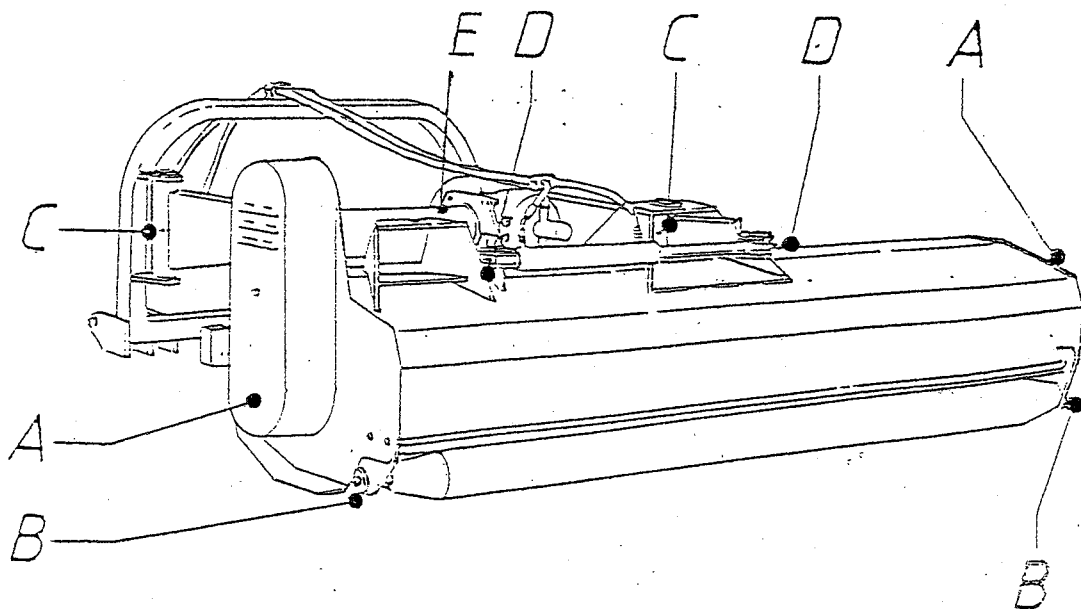
LUBRICANT SPOTS.

The following spots have to be greased daily with a multipurpose lithium grease (or under heavy circumstances, even more times per day in order to remove penetrated dirt)

Lubricant spots;

- A. End bearing of the rotor shaft (2).
- B. Ball bearings of the roller (2).
- C. Hinge bushes of the arms between 3-points linkage and main frame (4).
- D. Hinge points of the cylinder (2).
- E. shaft. (1)

The PTO drive shaft has to be greased according to the greasing instructions of its manufacturer.



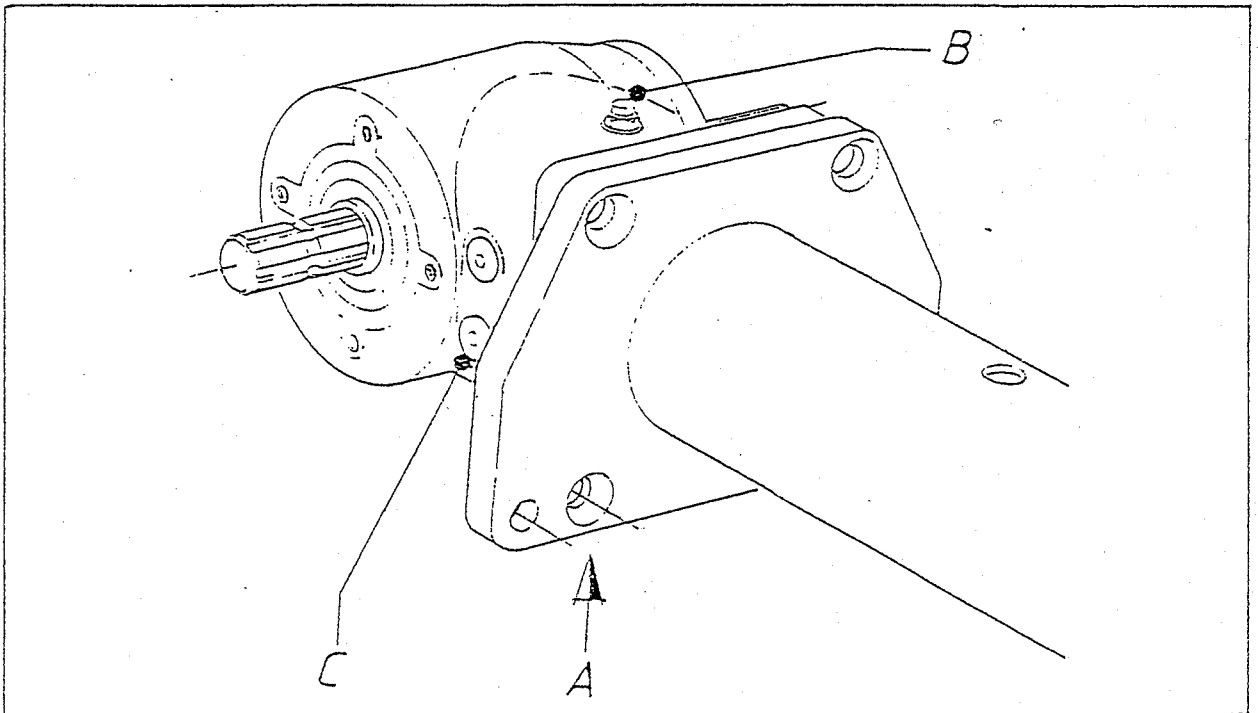
GEARBOX.

The required oil volume for the gearbox is 1.2 lt Gear oil SAE 90 EP.

The oil in the gearbox has to be renewed after the first 20 working hours, and then renewed once every the season. It is recommended to check the gearbox regularly on possible leakages.

Renewal of oil has to be done as follows;

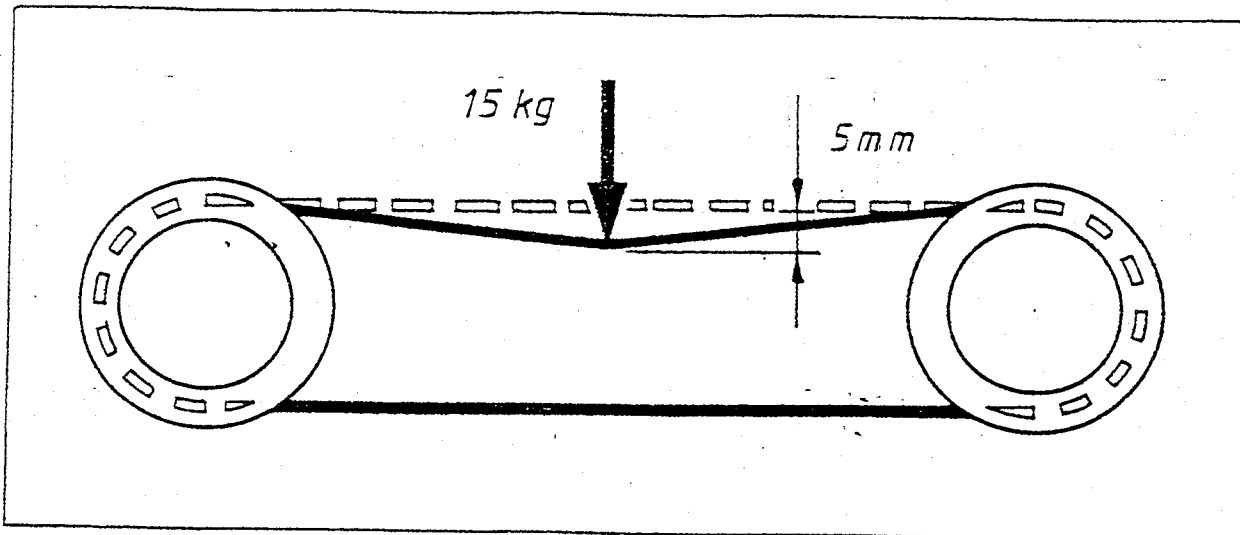
- clean the gearbox around the drain plug and fill plug,
- remove plug A - B.
- after drainage re-assemble plug A
- remove plug C.
- fill the gearbox, through opening B, until level C (approx. 1.9 lt.),
- re-assemble both plugs.



TENSIONING THE V-BELT.

Checking the V-Belt tension:

- remove belt guard [32] (see parts list 01),
- with a pressure of approx. 15 kg. The distortion should be approx. 5 mm.
- if necessary correct,
- replace the belt guard [32].



Tensioning of the V-Belt;

- slacken the four bolts several turns [3,4] (see part list 03)
- tighten the tensioning bolt [26]
- until the above tension has been achieved,
- relock the four bolts [3,4] again.

NOTE! FIRST TIGHTENING SHOULD BE PERFORMED AFTER APPROX. 5 MIN. OF OPERATION. THE SECOND TIGHTENING SHOULD BE PERFORMED AFTER APPROX. 1 HOUR. THEREAFTER THE TENSION AND CONDITION OF THE POWER BELT MUST BE CHECKED REGULARLY!

ORDERING OF SPARE PARTS.

Your purchase order for spare parts should indicate following information (see the identification shield on the mower);

- Model
- Type
- Serial number
- Parts number prescription and quantity.

For spare parts of which the parts number cannot be indicated, we suggest you to send the original spare part to avoid fault delivery of the spare part required for.

Sometimes the illustration in this manual can deviate from the original, this is due to the fact that amelioration have been performed before a new edition of this manual has been printed.

It is advisable not to rely completely on the illustrations.

Use only original VOTEX spare parts. Than you can be assured of an excellent quality and right fit.

LIABILITY AND WARRANTY.

Vogelenzang Andelst B.V. guarantees correct operation of the mower for a period of 12 (twelve) months, provided all instructions of according this manual have been followed up.

1. Mower may only be operated by persons who have thoroughly read this manual and who are well aware of the danger which may occur if these instructions have not been followed up.
The above applies also to the persons responsible for adjustment and maintenance of the mower.
2. Mower may only be used for the purposes designed for.
3. All safety instructions have to be taken carefully into account.
4. Only original Votex spare parts and prescribed grease type may be used.
5. Local regulations regarding accident prevention, transport security and traffic rules have to be strictly followed up.

6 **IMPORTANT;**

This instruction manual applies to the original Votex technical execution. Therefore Vogelenzang Andelst B.V. cannot be held responsible for any damages whatsoever caused by unauthorized technical modification of the mower or use of other than Votex spare parts.
The same applies to use of other grease waists, incorrect or insufficient maintenance and wrong performed repairs, without preliminary consult with Vogelenzang Andelst B.V.

7 **WE DRAW YOUR ATTENTION TO THE FACT THAT;**

Vogelenzang Andelst B.V. when instructions of this manual have not been followed up, cannot accept any warranty claim during the warranty period.

8. Vogelenzang Andelst B.V. plies to the general delivery and payment conditions of the Metaalunie (metal union). These are filed at the Griffie van de Rechtbank, Rotterdam (office of the clerk for the court of justice in Rotterdam). In this are resumed the Algemene Handelsvoorwaarden Landbouwwerktuigen en Landbouwwitruitingen - A.H.L. (General trade conditions for agricultural implements and agricultural equipment).

REMARKS.

ALL RIGHTS RESERVED.

Without preliminary, explicit permission of Vogelenzang Andelst B.V. its is NOT allowed to duplicate and/or make public by print, photocopy, microfilm or in whatsoever other way the contents of this manual.

Same applies to the belonging illustrations and diagrams.

Vogelenzang Andelst B.V. reserves the right to modify its spare parts, if necessary, at any time without previous notice to its customers.

Also the contents of this manual could be adapted accordingly without prior notice.

For more specific information about adjustment, maintenance and repair, not prescribed for in this manual, we suggest you to contact the technical department of your dealer.

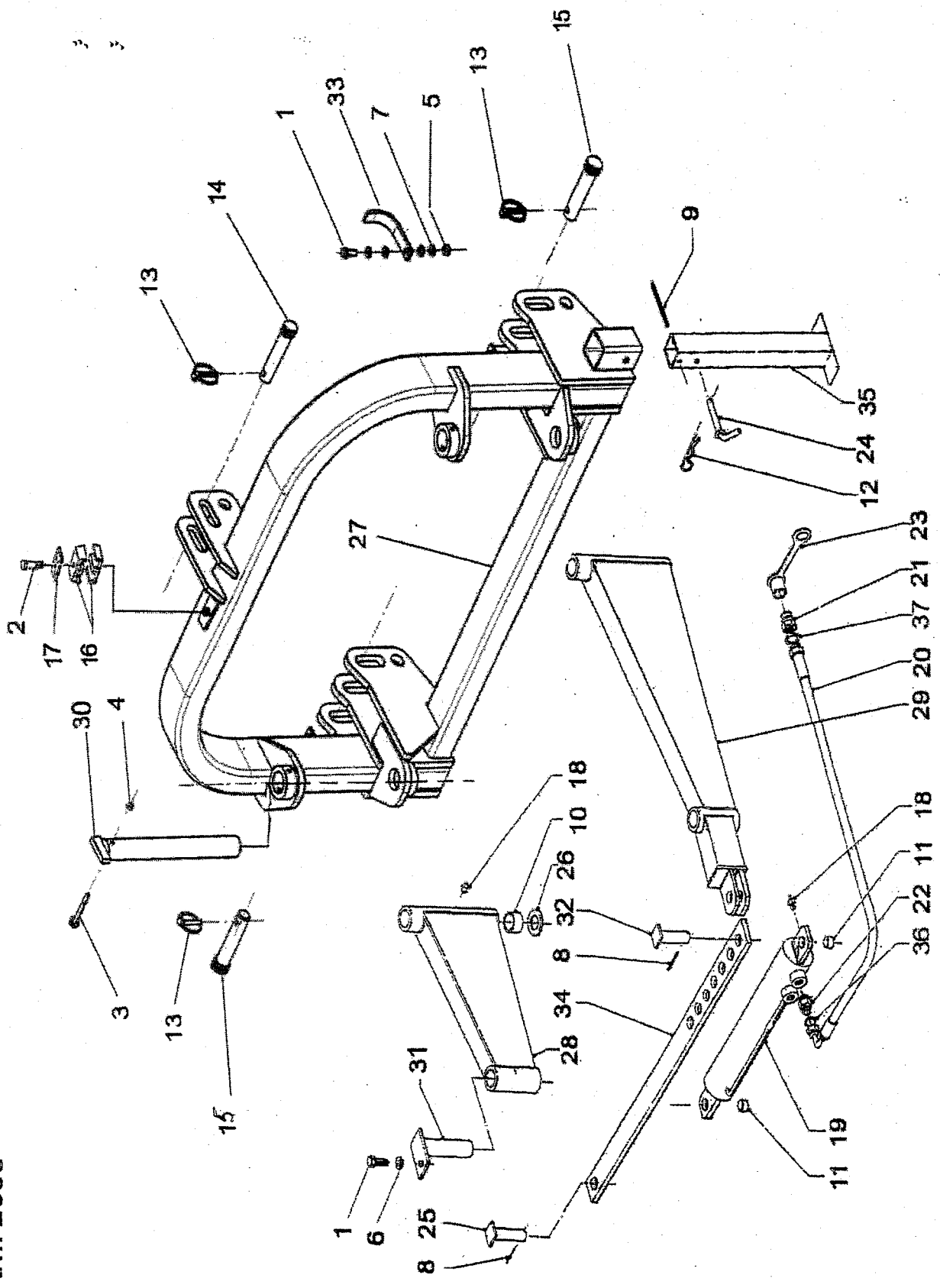
7.7.b. Assembly of the rotor shaft

The assembly of the rotor shaft may only be carried out with a tackle with a minimum lifting capacity of 300 kg.

The numbers between brackets [...] refer to the relevant spare parts of the spare parts list (see spare parts list)

- always mount new sealing rings and labyrinth seals, [2+10],
- slide the conical bearing bush [19] on the **long stub** in such a way that the opening in the bush falls into in the lubricating canal in the shaft,
- fix the tackle onto the shackle [21] in the middle of the rotor shaft,
- lift the rotor shaft [13] and put **short stub** through the hole in the side plate of the cutting head,
- put the **long stub** through the already mounted bearing house and mount the lockingwasher and locknut , [7]
- turn the lockingnut handtight. Then measure the distance between the breast of the rotor shaft and the outer part of the bearinghousing [18] with a sliding gauge,
- slide the shaft so that the distance is $\pm 15\text{mm}$ and tighten the locknut, (attention: the distance might change again, **after fastening it must be exactly 13mm**)
- than the bearing at the other side has to be tightened as follows,
- measure the distance between the breast of the rotor shaft [13], to which the shims are placed, up to the upper part of the cutting house,
- add 24mm (thickness of the bearinghousing and bearing plate),
- deduct 34 mm of the total sum (height of the spacer bush),
- the difference in discrepancy has to be filled up with shims towards the breast of the rotor shaft, [15]
- then mount the bearing plate with new labyrinth seals [10] and a new sealing ring [2] with a spacer bush [77] against the shims, **Attention: always put grease between the two halves of the labyrinth seals**
- than mount the conical bearing bush [7] with bearing [6] and bearing house [15] without cover and tighten temporarily,
- mount the lockingwasher and locknut to the adapter sleeve and tighten it till there is a clear metal on metal contact between the lockingwasher and bearing. Turn the locknut 90° to tension the conical bush. Lock the locknut
- after mounting the necessary shims and grease in the bearings, the rotor shaft should be able to turn easily, however without radial tolerance,
- fill the cover half with grease
- lubricate the end bearing (by the grease nipple in the bearing cover)
- tighten the locknut of the bearing on the other side once again and lock it,
- mount the distance ring (attention: sloping side in the direction of the cutting house) and mount the key,
- mount the new sealing ring, the v-belt pulley, lockingwasher and locknut
- tighten the nut, lock it
- always check before workin with the machine if, while turning, the temperature of the bearinghouse on the outherside of the cutting head.
- (a little heating is harmless but you should be able to hold the hand on the cover)

Votex roadmaster 06 Driepuntsframe Three points linkage Attelage 3 points Dreipunktaufhängung
1506 t/m 2306



Votex roadmaster 06
1506-1906-2306

Driepuntsframe

Three points linkage

Attelage 3 points

Dreipunkt aufhängung

no.	<u>onderdeel nummer</u>	<u>aantal</u>	<u>Omschrijving</u>	<u>Discription</u>	<u>Designation</u>	<u>Beschreibung</u>	<u>technische info</u>
1	10.02.118	2	Zeskanttapbout	Bolt	Vis	Sechskantschraube	M10x20-8.8
2	10.04.095	1	Zeskantbout	Bolt	Vis	Sechskantschraube	M8x45-8.8
3	10.04.101	1	Zeskantbout	Bolt	Vis	Sechskantschraube	M8x75-8.8
4	11.05.008	1	Borgmoer	Lock nut	Écrou autofreiné	Sicherungsmutter	M8
5	11.05.010	1	Borgmoer	Lock nut	Écrou autofreiné	Sicherungsmutter	M10
6	12.01.010	1	Veerring	Spring washer	Rondelle grower	Federring	M10
7	12.40.010	4	Schotelveer	Disc spring	Rondelle ressort	Tellerfeder	20x10.2x0.5
8	14.10.040	2	Spanstift	Clamping bush	Goupille elastique	Spannstifte	6x40
9	14.10.060	1	Spanstift	Clamping bush	Goupille elastique	Spannstifte	6x60
10	18.15.050	8	Glijlager	Bush	Bague d'usure	Gleitlager	40.44.30A
11	18.15.054	2	Glijlager	Bush	Bague d'usure	Gleitlager	30.34.20A
12	20.01.004	1	Borgveer	Gripclip	Goupille beta	Federstecker	4mm
13	20.01.008	3	Borgclip	Linch pin	Goupille clips	Klappstecker	11mm
14	20.01.132	1	Topstangpen	Top link pin	Broche troisieme point	Bolzen	
15	20.01.133	2	Werktuigpen	Link pin	Broche	Lenker bolzen	
16	20.01.080	2	Leidingbeugel dubbel	Clamp double	Bride double	Rohrschelle doppelt	
17	20.01.082	1	Dekplaat	Clamp plate	Plaque	Platte	
18	20.03.003	6	Smeernippel	Grease nipple	Graisser	Schmiernippel	M8x1.25-180°
19	26.01.220	1	Hydrauliekcilinder	Hydraulic cylinder	Verin hydraulique	Hydraulikzylinder	
19a	17.04.001	1	Afdichtingsset	Seal set	Jeu de joints	Dichtungssatz	50x32
20	26.05.530	2	Hydrauliekslang	Hydraulic hose	Tuyau hydraulique	Hydraulikschlauch	3/8 L=2500
21	26.10.010	2	Snelkoppeling	Hydraulic coupling	Raccord rapide hydraulique	Kupplungsstecker	1/2BSP
22	26.10.211	2	Nippel bewerkt	Nipple processed	Mamelon labourée	Doppelnippel bearbeitet	1.5mm
23	26.10.244	2	Stofkap	Dust cap	Capuchon de protection	Staubkappe	1/2" rood
24	43.05.120	1	Vergrendelpen	Locking pin	Axe de verouillage	Bolzen	
25	45.07.430	1	Scharnierpen	Hinge pin	Axe de charnière	Gelenkbolzen	
26	45.07.450	8	Bronzen ring	Bronze washer	Rondelle en bronze	Bronze ring	
27	45.07.481	1	Driepuntsframe	Three points linkage	Attelage trois points	Dreipunkt Aufhängung	
28	45.07.490	1	Scharnierarm links	Hinge arm left	Bras d'charnière gauche	Gelenkarm links	
29	45.07.500	1	Scharnierarm rechts	Hinge arm right	Bras d'charnière droit	Gelenkarm rechts	
30	45.07.511	2	Scharnierpen	Hinge pin	Axe de charnière	Gelenkbolzen	

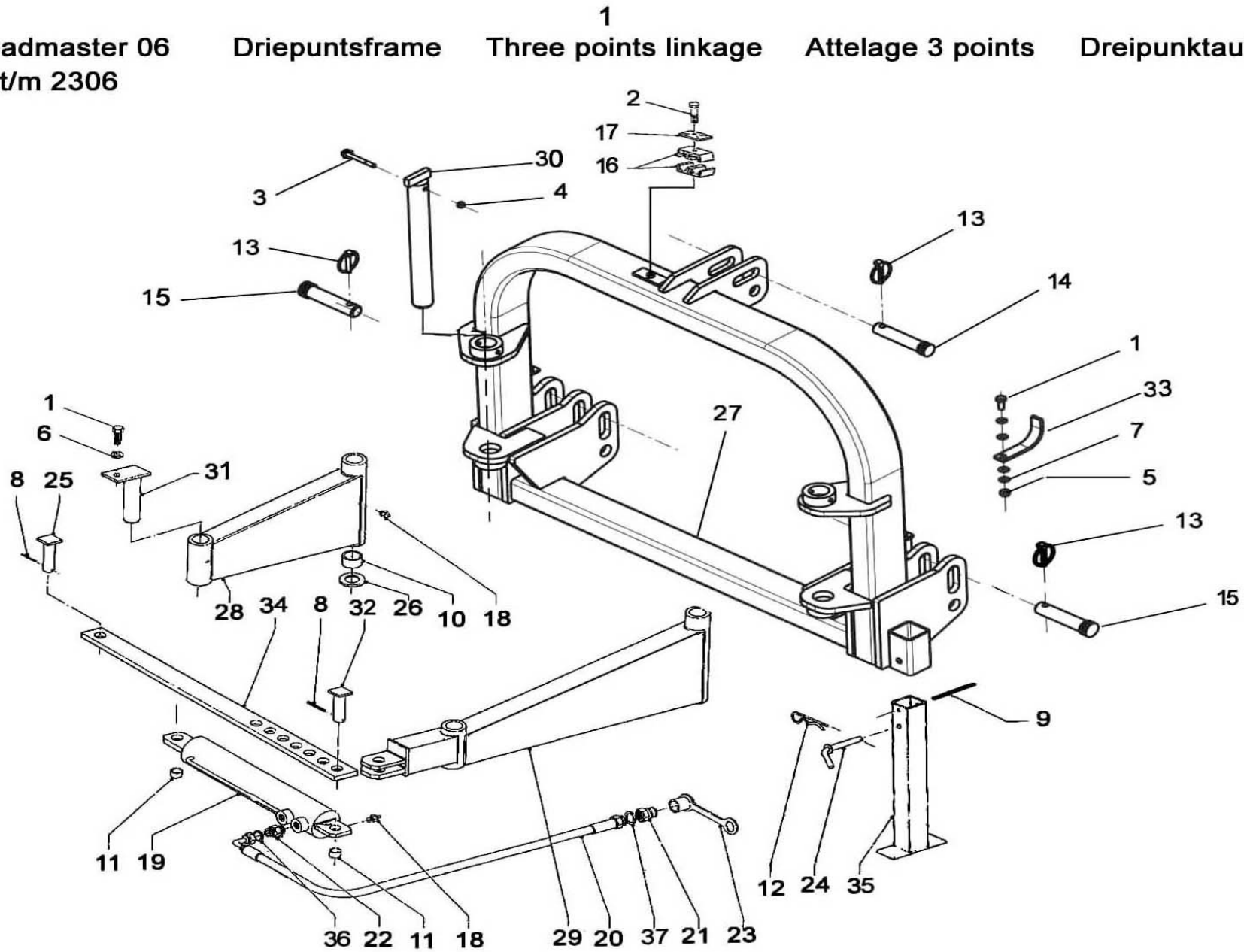
Votex roadmaster 06
1506 t/m 2306

Driepuntsframe

Three points linkage

Attelage 3 points

Dreipunktaufhängung



Votex roadmaster 06
1506-1906-2306

Driepuntsframe

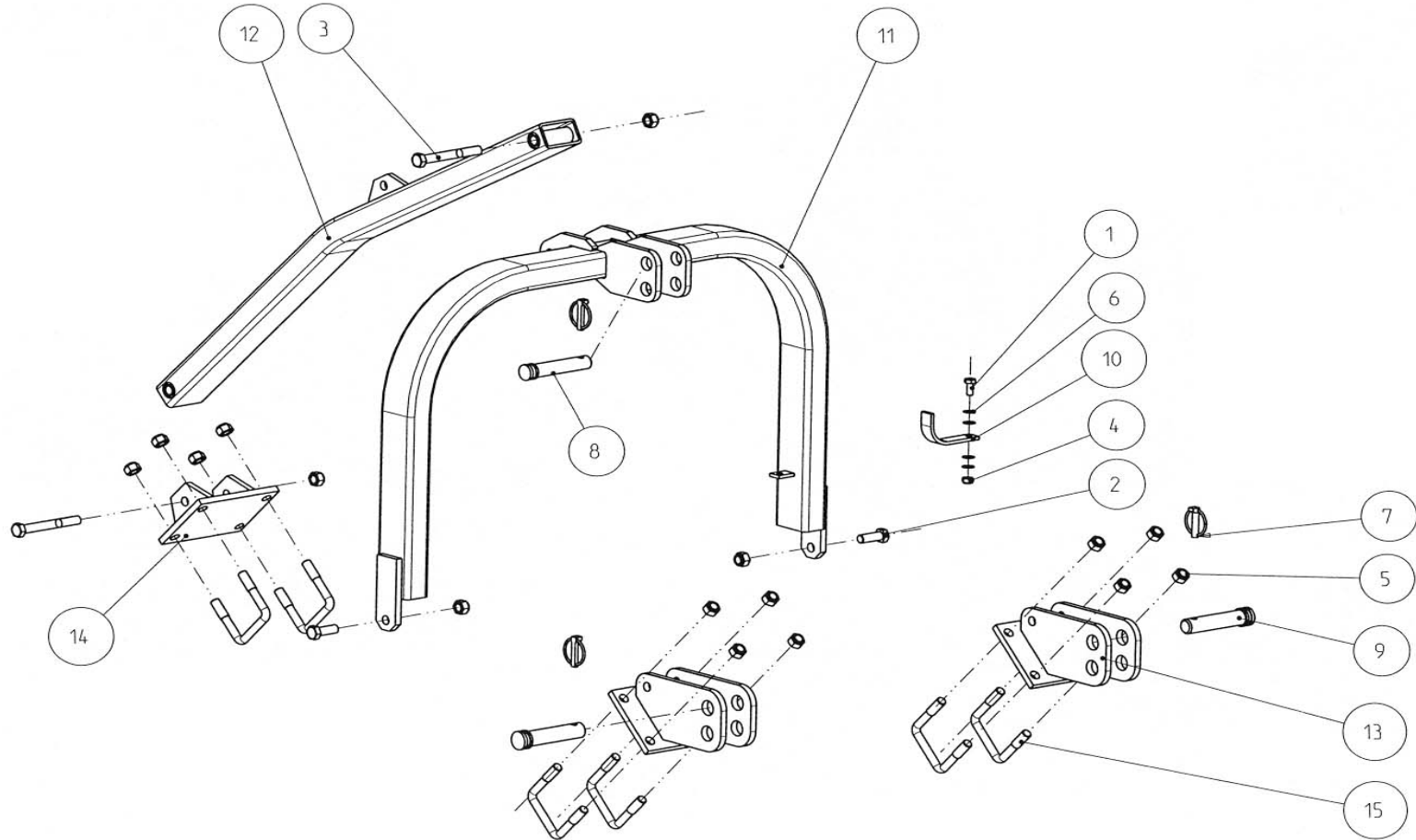
Three points linkage

Attelage 3 points

**Dreipunkt
aanhanging**

no.	<u>onderdeel nummer</u>	<u>aantal</u>	<u>Omschrijving</u>	<u>Discription</u>	<u>Designation</u>	<u>Beschreibung</u>	<u>technische info</u>
31	45.07.521	2	Scharnierpen	Hinge pin	Axe de charnière	Gelenkbolzen	
32	45.07.523	1	Scharnierpen	Hinge pin	Axe de charnière	Gelenkbolzen	
33	45.07.573	1	Ophangbeugel	Suspension bracket	Étrier de suspension	Aufhängebügel	
34	45.08.760	1	Verstelstrip	Adjustment strip	Plaque de réglage	Einstellstreife	
35	45.08.780	1	Steunpoot	Parking leg	Béquille	Stütze	
36	77.26.186	2	Usit ring	Seal ring	Rondelle joint	Dichtungsring	3/8"
37	77.26.188	2	Usit ring	Seal ring	Rondelle joint	Dichtungsring	1/2"

Votex Roadmaster 06 Driepuntsframe Three points linkage Attelage 3-points Dreipunktaufhängung
2606-3006



**Votex roadmaster 06
2606-3006**

			Driepuntsframe	Three points linkage	Attelage 3 points	Dreipunkt aufhängung	
no.	<u>onderdeel nummer</u>	<u>aantal</u>	<u>Omschrijving</u>	<u>Discription</u>	<u>Designation</u>	<u>Beschreibung</u>	<u>technische info</u>
1	10.02.120	1	Zeskanttapbout	Bolt	Vis	Sechskantschraube	M10x25-8.8
2	10.02.207	2	Zeskanttapbout	Bolt	Vis	Sechskantschraube	M16X45-8.8
3	10.04.219	2	Zeskantbout	Bolt	Vis	Sechskantschraube	M16x130-8.8
4	11.05.010	1	Borgmoer	Lock nut	Écrou autofreiné	Sicherungsmutter	M10
5	11.05.016	17	Borgmoer	Lock nut	Écrou autofreiné	Sicherungsmutter	M16
6	12.40.010	4	Schotelveer	Disc spring	Rondelle ressort	Tellerfeder	20x10.2x0.5
7	20.01.008	3	Borgclip	Linch pin	Goupille clips	Klappstecker	11mm
8	20.01.132	1	Topstangpen	Top link pin	Broche troisieme point	Bolzen	
9	20.01.133	2	Werktuigpen	Link pin	Broche	Lenker bolzen	
10	45.07.573	1	Ophangbeugel	Suspension bracket	Étrier de suspension	Aufhängebügel	
11	45.07.583	1	Driepuntsframe	Three points linkage	Attelage trois points	Dreipunkt Aufhängung	
12	45.07.586	1	Schoorstang	Prop	Jambe de force	Stütze	
13	45.07.703	2	Aankoppelbek	Couple jaw	Mâchoire d'attelage	Anhängmaul	
14	45.07.706	1	Aankoppelbek	Couple jaw	Mâchoire d'attelage	Anhängmaul	
15	73.31.495	6	Strop	U bolt	Etrier	Klemmbügel	M16-8.8

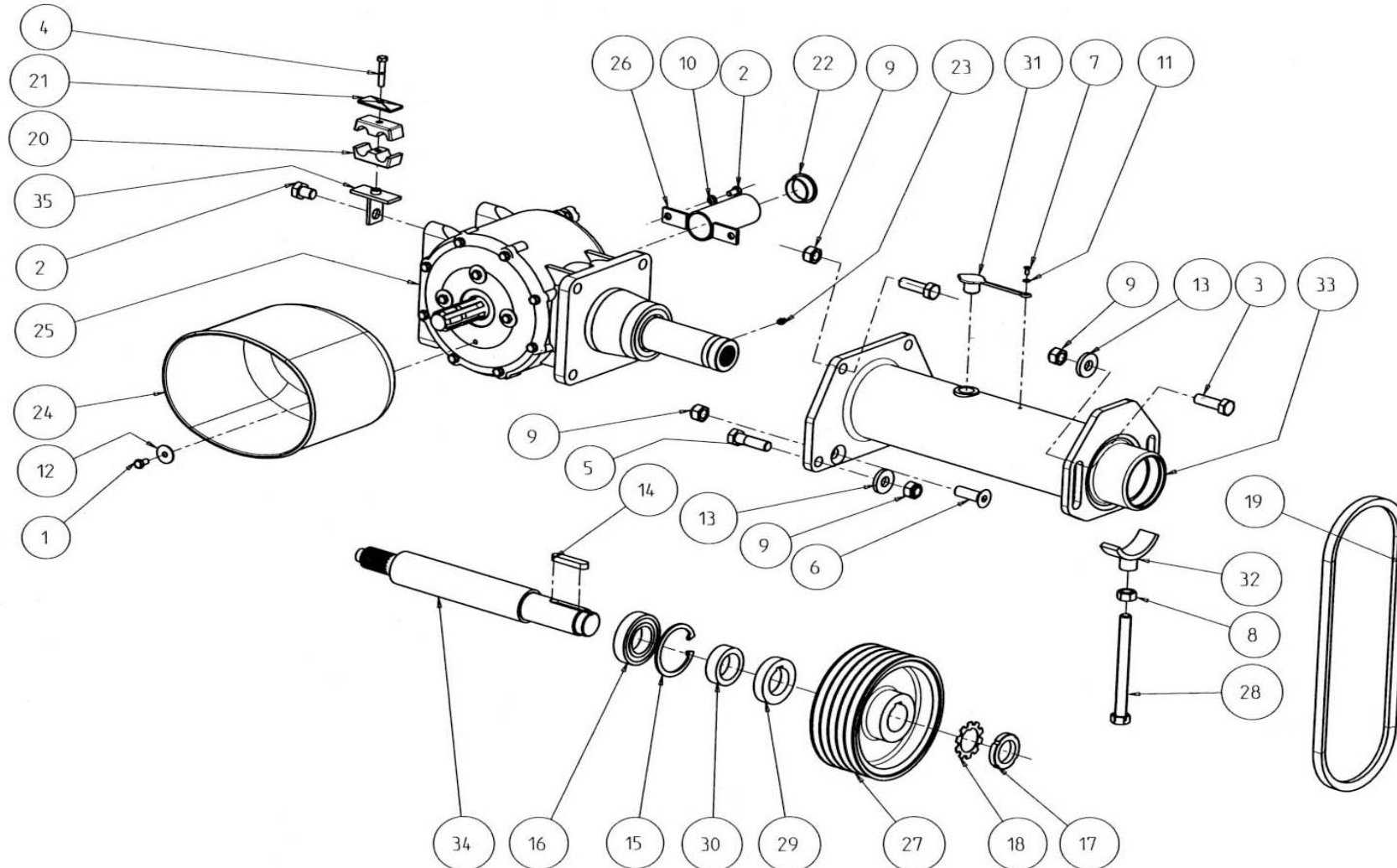
Votex Roadmaster 06
1506-1906-2306

Aandrijving

Drive

Transmission

Antrieb



Votex roadmaster 06

no.	Aandrijving			Drive	Transmission	Antrieb	Technische info		
	<u>onderdeel nummer</u>	<u>type</u> 1506	<u>type</u> 1906					<u>type</u> 2306	<u>Omschrijving</u>
1	10.02.087	6	6	6	Zeskanttapbout	Bolt	Vis	Sechskantschraube	M8x16-8.8
2	10.02.201	1	1	1	Zeskanttapbout	Bolt	Vis	Sechskantschraube	M16x20-8.8
3	10.02.208	4	4	4	Zeskanttapbout	Bolt	Vis	Sechskantschraube	M16x50-8.8
4	10.04.095	1	1	1	Zeskantbout	Bolt	Vis	Sechskantschraube	M8x45-8.8
5	10.04.209	2	2	2	Zeskantbout	Bolt	Vis	Sechskantschraube	M16x55-8.8
6	10.29.208	2	2	2	Verzonken schroef	Socket screw	Vis à tête fraisée	Senkschraube	M16x50
7	10.13.038	1	1	1	Cilinderkopschroef	Cilinderheadscrew	Vis à tête cilindrique	Zylinderkopfschraube	M5x12
8	11.02.016	1	1	1	Zeskantmoer	Nut	Écrou	Mutter	M16
9	11.05.016	8	8	8	Borgmoer	Lock nut	Écrou autofreiné	Sicherungsmutter	M16
10	12.01.008	2	2	2	Veerring	Spring washer	Rondelle grower	Federring	M8
11	12.11.005	1	1	1	Sluitring	Washer	Rondelle	Unterlegscheibe	M5
12	12.15.008	4	4	4	Carrosseriering	Mudwingwasher	Rondelle de carrosserie	Kotflügelscheibe	M8x30x1.5
13	12.15.516	4	4	4	Sluitring	Washer	Rondelle	Unterlegscheibe	17x40x6
14	15.09.063	1	1	1	Inlegspie	Sunk key	Clavette	Paßfeder	14x9x63-
15	12.31.085	1	1	1	Zekeringsring	Circlip	Circlip	Sicherungsringe	85x3
16	18.05.009	1	1	1	Kogellager	Ball bearing	Roulement à billes	Kugellager	6209-2RS1/C3
17	18.51.008	1	1	1	Borgmoer	Lock nut	Écrou frein	Sicherungsmutter	KM-8
18	18.52.008	1	1	1	Borgring	Lock ring	Rondelle de blocage	Sicherungsring	MB-8
19	19.05.202	5	5	5	V-snaar	V-belt	Courroie	Keilrieme	XPA-1360
20	20.01.080	2	2	2	Leidingbeugel dubbel	Clamp double	Bride double	Rohrschelle doppelt	
21	20.01.082	1	1	1	Dekplaat	Clamp plate	Plaque	Platte	
22	20.01.087	1	1	1	Afsluitdop	Cap	Bouchon	Abschlußstöpsel	
23	20.03.003	1	1	1	Smeernippel	Grease nipple	Graisseur	Schmiernippel	M8x1.25-180°
24	27.10.149	1	1	1	Afscherming	PTO shaft guard	Protection transmission	GelenkwelleSchutz	P82.25
25	28.01.124	1	1	1	Tandwielkast	Gearbox	Boitier à renvoie d'angle	Getriebe	1:2,7
26	45.10.406	1	1	1	Beschermbus	Protection bush	Tube de protection	Schutzbüchse	
27	36.01.420	1	1	1	V-snaarschijf	V-belt pulley	Poulie à gorges	Keilriemenscheibe	200SPA5
28	45.09.340	1	1	1	Spanbout	Clamping bolt	Boulon de serrage	Spannvorrichtung	

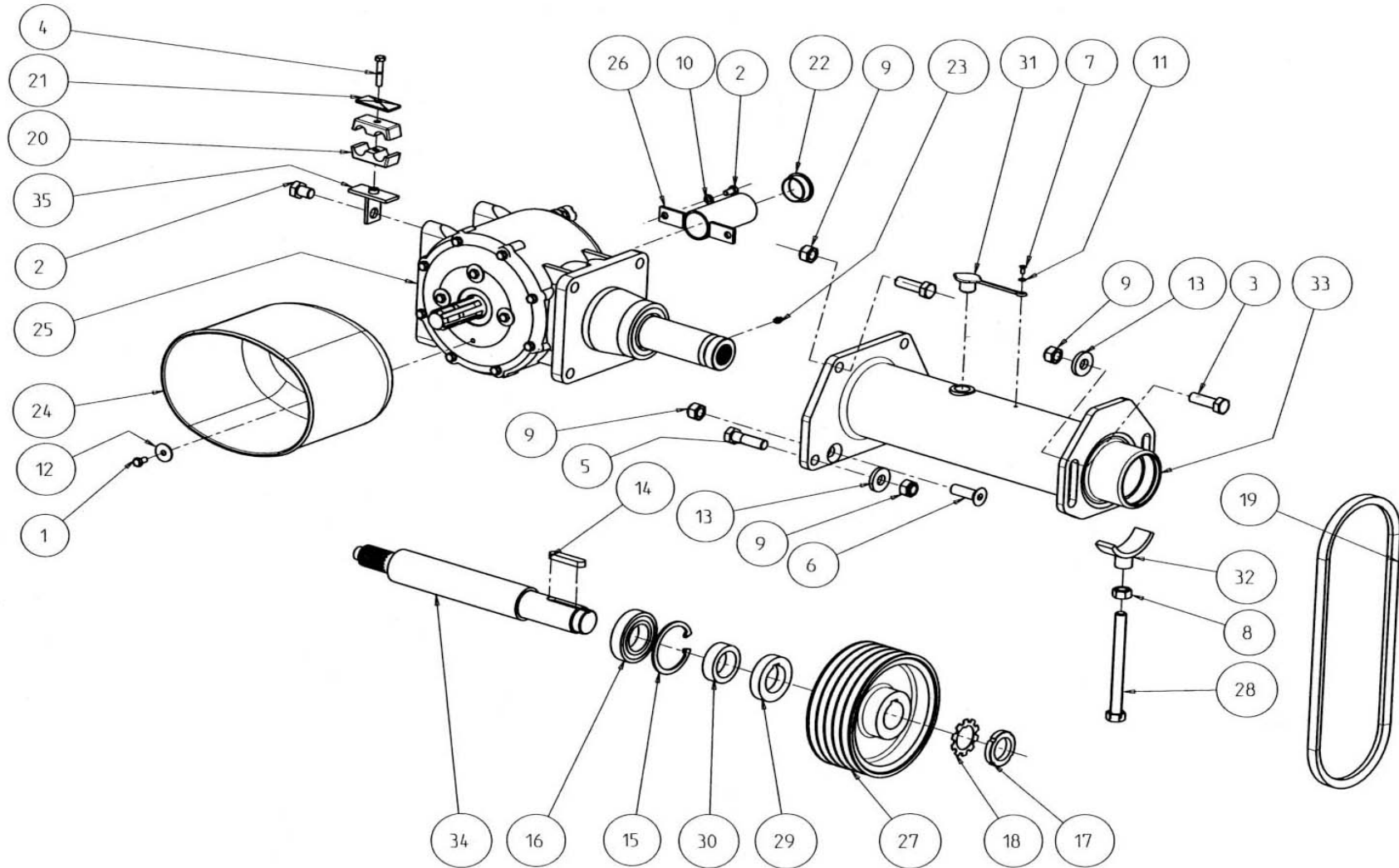
Votex Roadmaster 06
1506-1906-2306

Aandrijving

Drive

Transmission

Antrieb



Votex roadmaster 06

no.	Aandrijving			Omschrijving	Drive	Transmission	Antrieb	technische info	
	<u>onderdeel nummer</u>	<u>1506</u>	<u>type 1906</u>						<u>2306</u>
29	45.09.350	1	1	1	Vulschijf	Disc	Disque	Scheibe	
30	45.09.380	1	1	1	Afstandsring	Distance ring	Rondelle d'entretoise	Distanzring	
31	45.09.400	1	1	1	Stofplug	Dust plug	Tampon de protection	Staubpfropfen	
32	45.09.410	1	1	1	Druksegment	Clamping piece	Tendeur	Spannvorrichtung	
33	**45.09.530	1	1	1	Aandrijfhuis	Drive house	Cage d'entraînement	Antriebsgehäuse	L=460mm
34	**45.09.534	1	1	1	Aandrijfjas	Drive shaft	Arbre d'entraînement	Antriebswelle	L=431mm
35	45.09.543	1	1	1	Slangsteun	Hose support	Support de tuyeau	Schlauchstütz	
**					Verlengde aandrijvingen				
33	45.09.576			1	Aandrijfhuis	Drive house	Cage d'entraînement	Antriebsgehäuse	L=625mm
34	45.09.581			1	Aandrijfjas	Drive shaft	Arbre d'entraînement	Antriebswelle	L=596mm

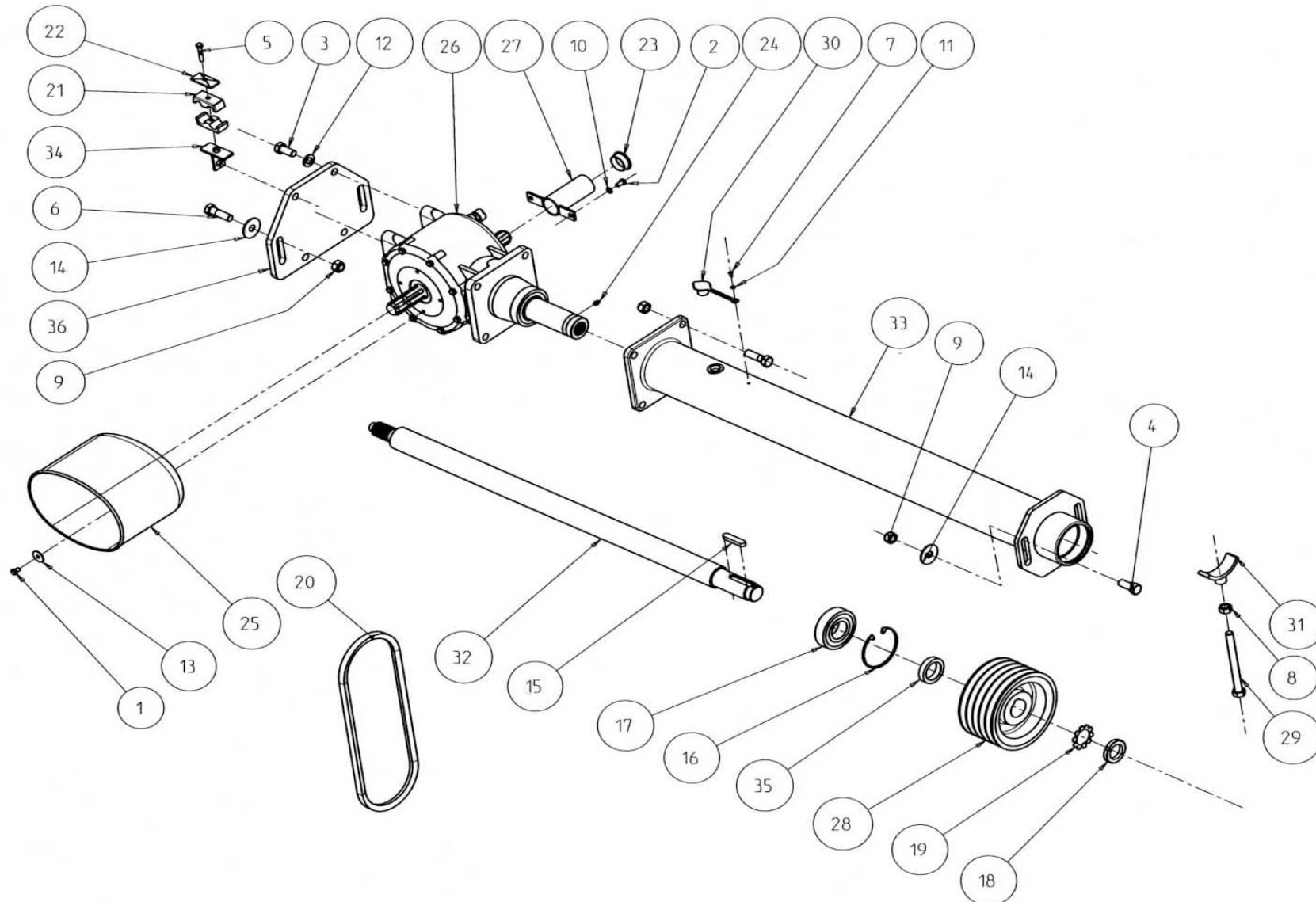
Votex Roadmaster 06
2606-3006

Aandrijving

Drive

Transmission

Antrieb



Votex roadmaster 06

no.	Aandrijving			3006 verlengd	Omschrijving	Drive Discription	Transmission Designation	Antrieb Beschreibung	technische info
	onderdeel nummer	type 2606	3006						
1	10.02.085	4	4	4	Zeskanttapbout	Bolt	Vis	Sechskantschraube	M8x12-8.8
2	10.02.087	2	2	2	Zeskanttapbout	Bolt	Vis	Sechskantschraube	M8x16-8.8
3	10.02.205	4	4	4	Zeskanttapbout	Bolt	Vis	Sechskantschraube	M16x35-8.8
4	10.02.208	6	6	6	Zeskanttapbout	Bolt	Vis	Sechskantschraube	M16x50-8.8
5	10.04.095	1	1	1	Zeskantbout	Bolt	Vis	Sechskantschraube	M8x45-8.8
6	10.04.209	2	2	2	Zeskantbout	Bolt	Vis	Sechskantschraube	M16x55-8.8
7	10.13.038	1	1	1	Cilinderkopschroef	Cilinderheadscrew	Vis à tête cylindrique	Zylinderkopfschraube	M5x12
8	11.02.016	1	1	1	Zeskantmoer	Nut	Écrou	Mutter	M16
9	11.05.016	8	8	8	Borgmoer	Lock nut	Écrou autofreiné	Sicherungsmutter	M16
10	12.01.008	2	2	2	Veerring	Spring washer	Rondelle grower	Federring	M8
11	12.11.005	1	1	1	Sluitring	Washer	Rondelle	Unterlegscheibe	M5
12	12.11.016	4	4	4	Sluitring	Washer	Rondelle	Unterlegscheibe	M16
13	12.15.008	4	4	4	Carrosseriering	Mudwingwasher	Rondelle de carrosserie	Kotflügelscheibe	M8x30x1.5
14	12.15.016	4	4	4	Carrosseriering	Mudwingwasher	Rondelle de carrosserie	Kotflügelscheibe	M16x50x2.5
15	15.09.063	1	1	1	Inlegspie	Sunk key	Clavette	Paßfeder	14x9x63-
16	12.31.100	1	1	1	Zekeringsring	Circlip	Circlip	Sicherungsringe	100x3
17	18.05.019	1	1	1	Kogellager	Ball bearing	Roulement à billes	Kugellager	6309-2RS1/C3
18	18.51.008	1	1	1	Borgmoer	Lock nut	Écrou frein	Sicherungsmutter	KM-8
19	18.52.008	1	1	1	Borgring	Lock ring	Rondelle de blocage	Sicherungsring	MB-8
20	19.06.211	5	5	5	V-snaar	V-belt	Courroie	Keilrieme	XPB-1650
21	20.01.080	2	2	2	Leidingbeugel dubbel	Clamp double	Bride double	Rohrschelle doppelt	
22	20.01.082	1	1	1	Dekplaat	Clamp plate	Plaque	Platte	
23	20.01.087	1	1	1	Afsluitdop	Cap	Bouchon	Abschlußstöpsel	
24	20.03.003	1	1	1	Smeernippel	Grease nipple	Graisser	Schmiernippel	M8x1.25-180°
25	27.10.149	1	1	1	Afscherming	PTO shaft guard	Protection transmission	GelenkwelleSchutz	P82.25
26	28.01.124	1	1	1	Tandwielkast	Gearbox	Boitier à renvoie d'angle	Getriebe	1:2,7

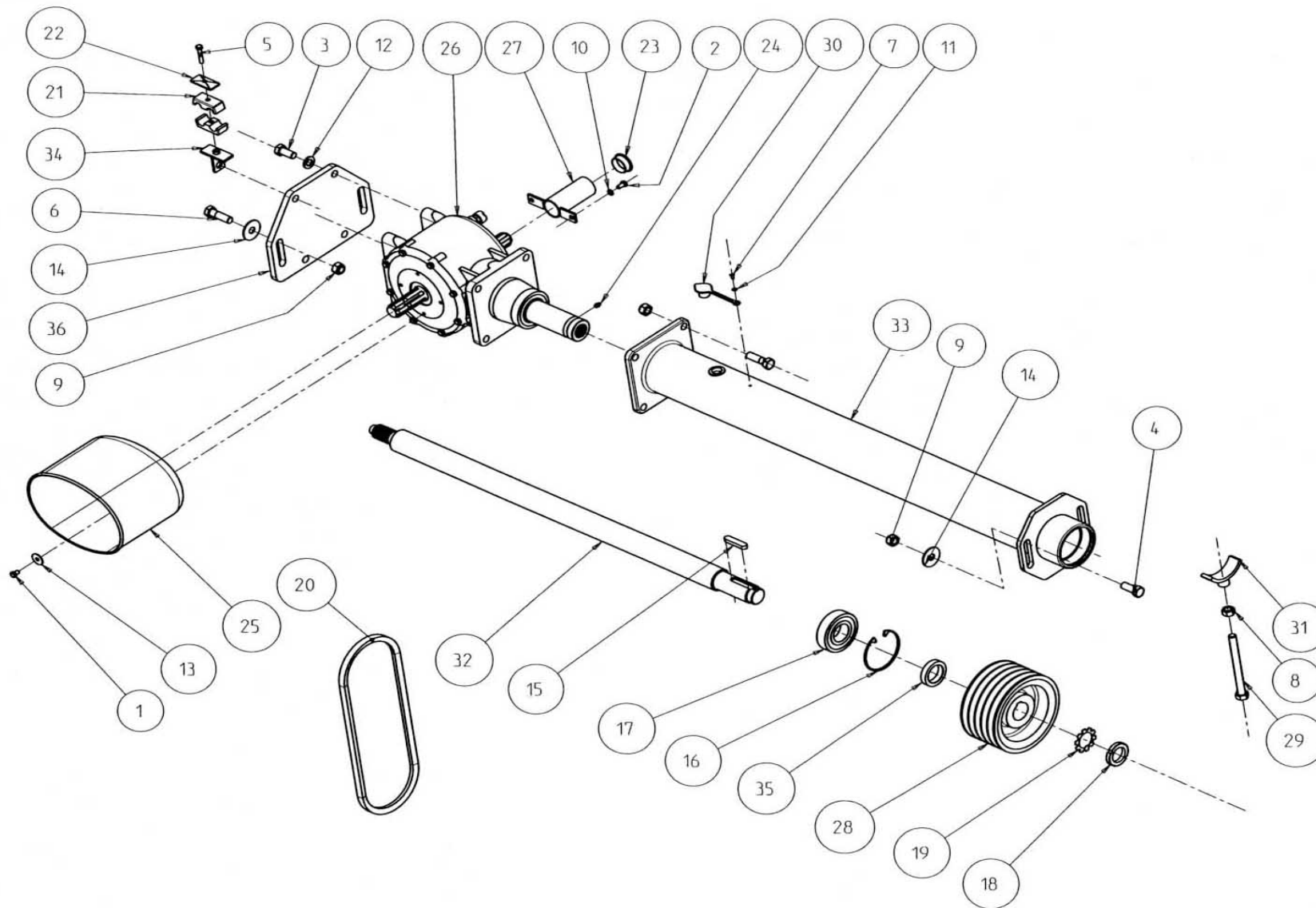
Votex Roadmaster 06
2606-3006

Aandrijving

Drive

Transmission

Antrieb



Votex roadmaster 06

no.	Aandrijving				Omschrijving	Drive	Transmission	Antrieb	technische info
	<u>onderdeel</u> nummer	<u>type</u>		<u>3006</u> verlengd					
		2606	3006						
27	45.10.406	1	1	1	Beschermbus	Protection bush	Tube de protection	Schutzbüchse	
28	36.01.884	1	1	1	V-snaarschijf	V-belt pulley	Poulie à gorges	Keilriemenscheibe	190SPB5
29	45.09.340	1	1	1	Spanbout	Clamping bolt	Boulon de serrage	Spannvorrichtung	
30	45.09.400	1	1	1	Stofplug	Dust plug	Tampon de protection	Staubpfropfen	
31	45.09.410	1	1	1	Druksegment	Clamping piece	Tendeur	Spannvorrichtung	
32	45.09.537	1	1		Aandrijfias	Drive shaft	Arbre d'entraînement	Antriebswelle	L=1151mm
	45.09.604			1	Aandrijfias	Drive shaft	Arbre d'entraînement	Antriebswelle	L=1511mm
33	45.09.541	1	1		Aandrijfhuis	Drive house	Cage d'entraînement	Antriebsgehäuse	L=1180mm
	45.09.606			1	Aandrijfhuis	Drive house	Cage d'entraînement	Antriebsgehäuse	L=1540mm
34	45.09.543	1	1	1	Slangsteun	Hose support	Support de tuyeau	Schlauchstütz	
35	45.09.600	1	1	1	Afstandsring	Distance ring	Rondelle d'entretoise	Distanzring	
36	45.39.016	1	1	1	Plaat	Plate	Tôle	Platte	

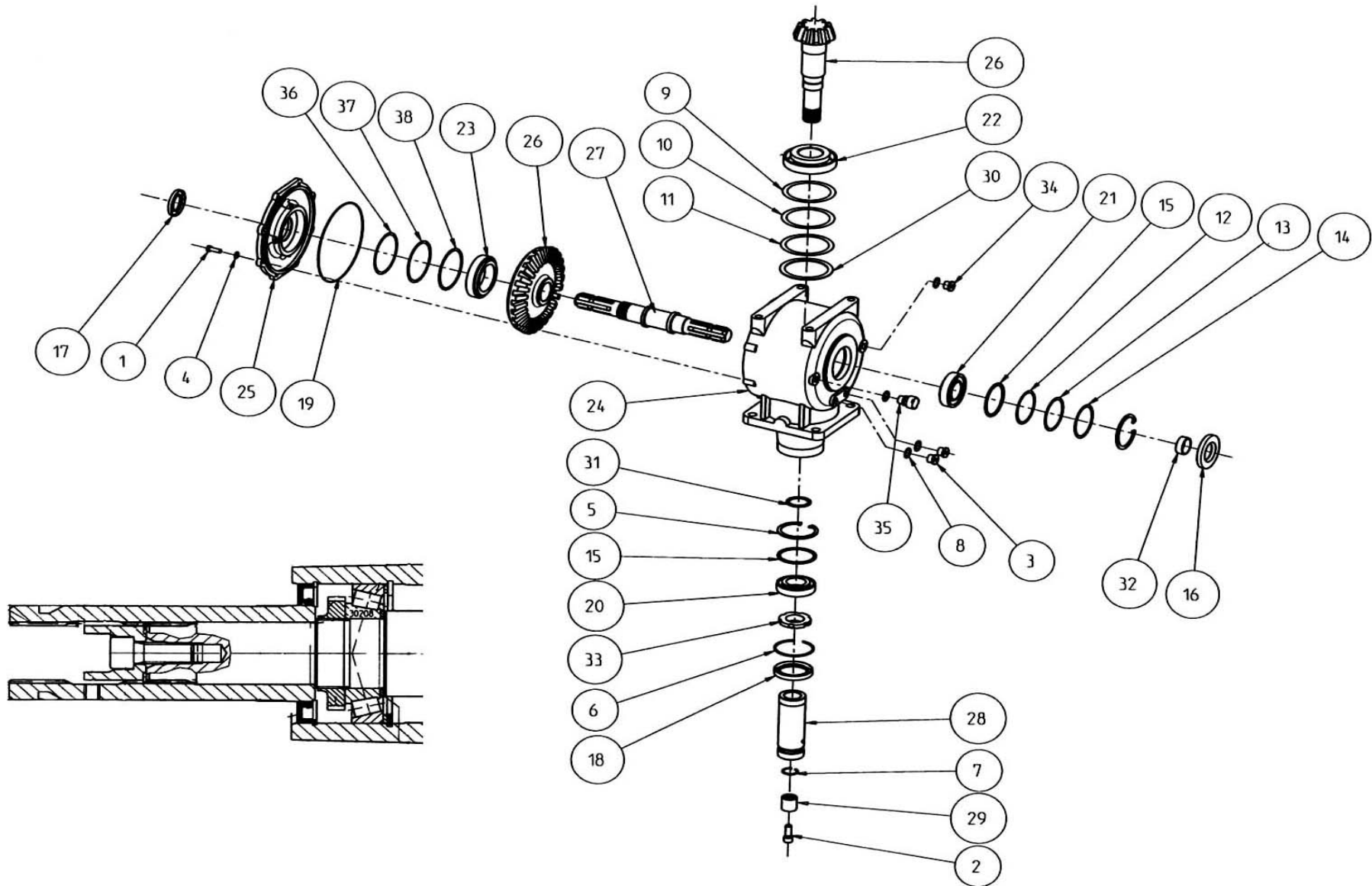
Votex Roadmaster 06

Tandwielkast

Gearbox

Boitier à renvoie d' angle

Getriebe



Votex roadmaster 06

			Tandwielkast	Gearbox	Boitier de renvoie d'angle	Getriebe	
no.	<u>onderdeel nummer</u>	<u>aantal</u>	<u>Omschrijving</u>	<u>Discription</u>	<u>Designation</u>	<u>Beschreibung</u>	<u>technische info</u>
1-38	28.01.124	1	Tandwielkast	Gearbox	Boitier à renvoie d'angle	Getriebe	1:2,7
1	10.02.091	8	Zeskanttapbout	Bolt	Vis	Sechskantschraube	M8x25-8.8
2	10.28.652	1	Cilinderkopschroef	Cilinderheadscrew	Vis à tête cylindrique	Zylinderkopfschraube	M12x3012,9
3	11.11.318	2	Kraagplug	Plug	Bouchon filetée	Verslúßschraube	M18x1.5
4	12.01.008	8	Veerring	Spring washer	Rondelle grower	Federring	M8
5	12.31.080	2	Zekeringsring	Circlip	Circlip	Sicherungsringe	80x2.5
6	12.32.580	1	Zekeringsring	Circlip	Circlip	Sicherungsringe	G SB80
7	12.35.032	1	Zekeringsring	Circlip	Circlip	Sicherungsringe	
8	13.02.004	4	Koperring	Copper washer	Rondelle en cuivre	Kupferring	18x24x1.5
9	13.03.021	xx	Shim	Shim	Rondelle de réglage	Paßscheibe	90x110x0.1
10	13.03.022	xx	Shim	Shim	Rondelle de réglage	Paßscheibe	90x110x0.3
11	13.03.023	xx	Shim	Shim	Rondelle de réglage	Paßscheibe	90x110x0.5
12	13.03.031	xx	Shim	Shim	Rondelle de réglage	Paßscheibe	70x80x0.1
13	13.03.032	xx	Shim	Shim	Rondelle de réglage	Paßscheibe	70x80x0.3
14	13.03.033	xx	Shim	Shim	Rondelle de réglage	Paßscheibe	70x80x0.5
15	13.03.050	1	Steuring	Reinforcing ring	Rondelle de renfort	Stützscheibe	70x90x2
16	17.01.014	1	Keerring	Seal ring	Joint d'étanchéité	Simmerring	40x80x10
17	17.01.031	1	Keerring	Seal ring	Joint d'étanchéité	Simmerring	35x62x7
18	17.01.047	1	Keerring	Seal ring	Joint d'étanchéité	Simmerring	55x80x10
19	17.02.044	1	O-ring	O-ring	Joint torique	O-ring	194x2
20	18.11.010	1	Kegellager	Tapered rolling bearing	Roulement à rouleau conique	Kegellager	30208-J2
21	18.11.011	1	Kegellager	Tapered rolling bearing	Roulement à rouleau conique	Kegellager	32208-J2
22	18.11.017	1	Kegellager	Tapered rolling bearing	Roulement à rouleau conique	Kegellager	31310 J2/QCL7C
23	18.11.024	1	Kegellager	Tapered rolling bearing	Roulement à rouleau conique	Kegellager	32013
24	28.02.220	1	Tandwielkasthuis	Gearbox case	Boitier	Getriebegehäuse	
25	28.03.036	1	Tandwielkastdeksel	Gearbox cover	Couvercle	Getriebedeckel	

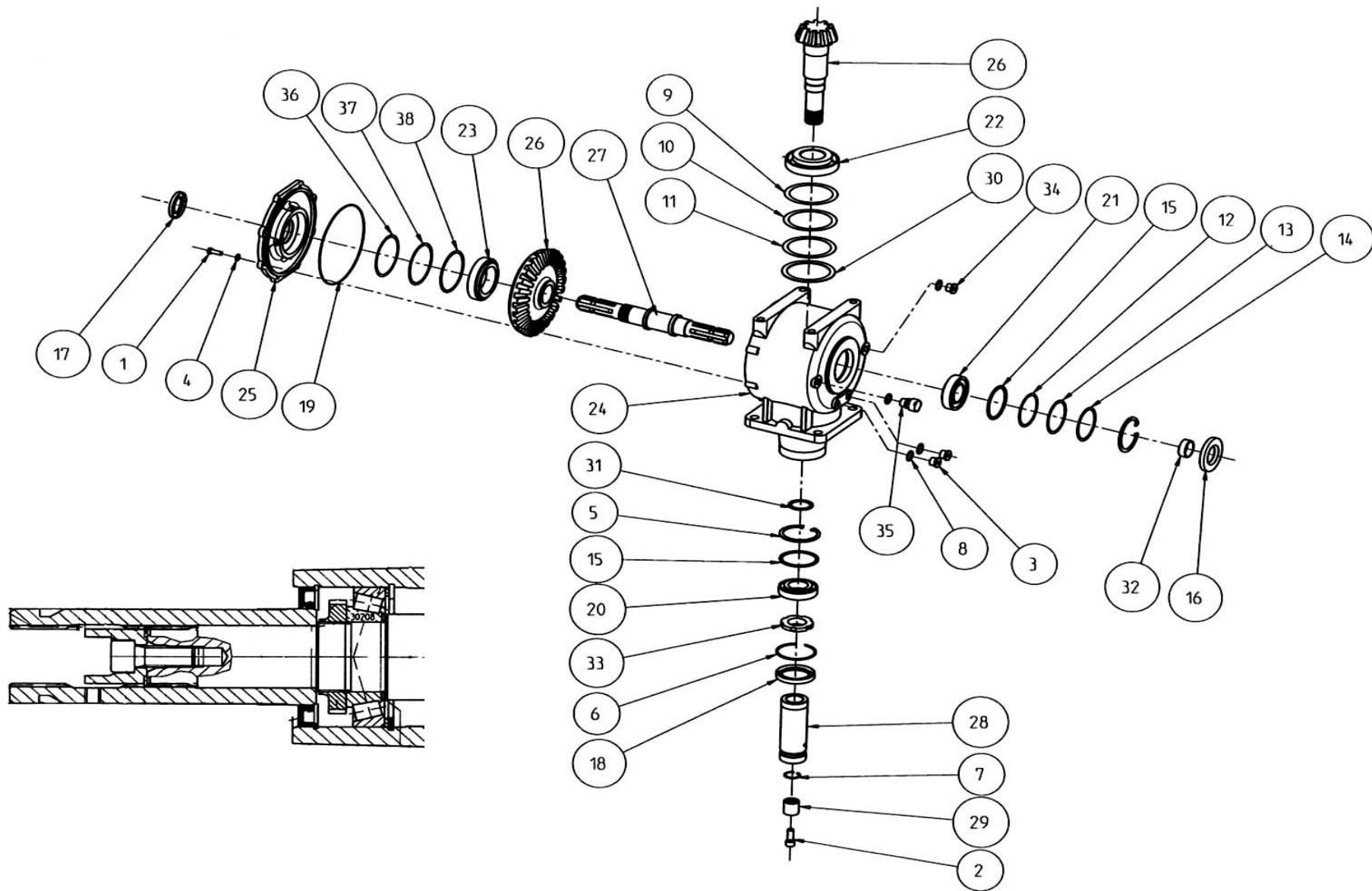
Votex Roadmaster 06

Tandwielkast

Gearbox

Boitier à renvoie d' angle

Getriebe



Votex roadmaster 06

			Tandwielkast	Gearbox	Boitier de renvoie d'angle	Getriebe	
no.	<u>onderdeel nummer</u>	<u>aantal</u>	<u>Omschrijving</u>	<u>Discription</u>	<u>Designation</u>	<u>Beschreibung</u>	<u>technische info</u>
26	28.05.070	1	Pignonas+kegelwiel	Crownwheel+pignon	Jeu de pignons d'angle	Kegelradsatz	
27	28.06.030	1	Aandrijfvas	Drive shaft	Arbre d'entraînement	Antriebachse	
28	28.06.108	1	Profielbus	Profile tube	Tube profilé	Profilbüchse	
29	28.06.109	1	Centreerbus	Centering bush	Tube de cenntrage	Zentrierbüchse	
30	28.07.041	1	Steunring	Reinforcing ring	Rondelle de support	Stützscheibe	
31	28.07.042	1	Afstandsring	Distance ring	Rondelle d'entretoise	Distanzring	
32	28.07.043	1	Loopring	Distance ring	Rondelle d'entretoise	Laufring	
33	28.08.040	1	Borgmoer	Lock nut	Écrou autofreiné	Sicherungsmutter	M40x1.5
34	28.08.053	1	Magneet aftapplug	Magnetic plug	Bouchon magnétique	Magnetpfropfen	M18x1.5
35	28.08.059	1	Ontluchtingsnippel	Air release nipple	Reniflard d'air	Entlüfter	
36	28.09.047	xx	Shim	Shim	Rondelle de réglage	Paßscheibe	90x100x0.1mm
37	28.09.048	xx	Shim	Shim	Rondelle de réglage	Paßscheibe	90x100x0.3mm
38	28.09.049	xx	Shim	Shim	Rondelle de réglage	Paßscheibe	90x100x0.5mm

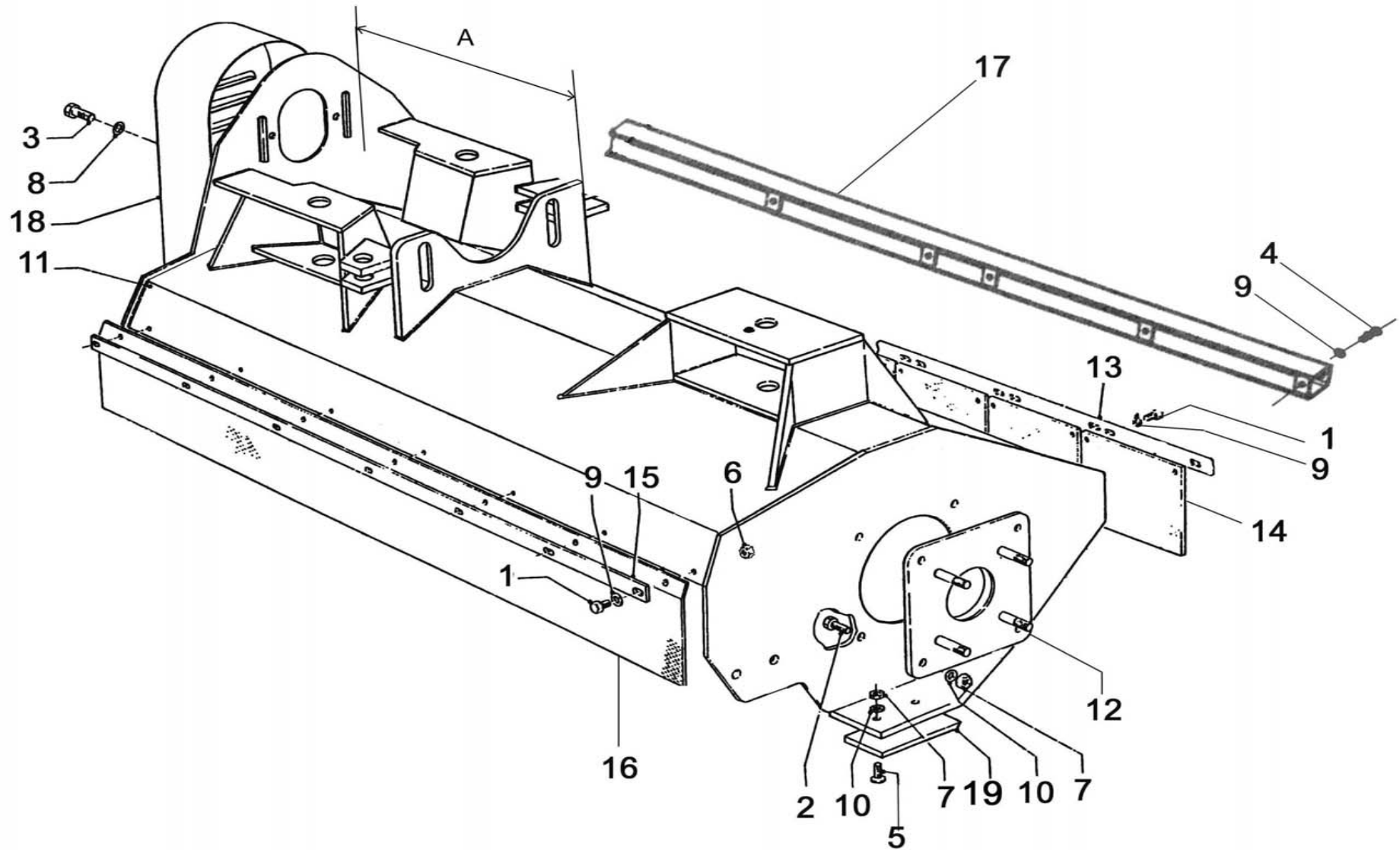
Vortex roadmaster 06
1506;1906;2306

Maaigedeelte

5
Cutting house

Carter de broyage

Mähergehäuse



Votex roadmaster 06

no.	Maaigedeelte			Omschrijving	Cutting head	Carter de broyage	Mähergehäuse	technische info
	onderdeel nummer	1506	type 1906					
1	10.02.092	21	27	31	Zeskanttapbout	Bolt	Vis	Sechskantschraube M8x30-8.8
2	10.02.121	4	4	4	Zeskanttapbout	Bolt	Vis	Sechskantschraube M10x30-8.8
3	10.02.203	1	1	1	Zeskanttapbout	Bolt	Vis	Sechskantschraube M16x25-8.8
4	10.04.093	6	6	8	Zeskantbout	Bolt	Vis	Sechskantschraube M8x35-8.8
5	10.29.121	4	4	4	Verzonken schroef	Socket screw	Vis á tête fraisée	Senkschraube M10x30
6	11.05.008	27	33	39	Borgmoer	Lock nut	Écrou autofreiné	Sicherungsmutter M8
7	11.05.010	8	8	8	Borgmoer	Lock nut	Écrou autofreiné	Sicherungsmutter M10
8	12.01.016	1	1	1	Veerring	Spring washer	Rondelle grower	Federring M16
9	12.11.008	54	66	78	Sluitring	Washer	Rondelle	Unterlegscheibe M8
10	12.11.010	8	8	8	Sluitring	Washer	Rondelle	Unterlegscheibe M10
11	45.01.541		1		Maaigedeelte	Cutting head	Carter de broyage	Mähergehäuse
	45.01.551			1	Maaigedeelte	Cutting head	Carter de broyage	Mähergehäuse A=446mm
	45.01.696			1	Maaigedeelte	Cutting head	Carter de broyage	Mähergehäuse A=611mm
	45.01.650	1			Maaigedeelte	Cutting head	Carter de broyage	Mähergehäuse A=446mm
12	45.04.220	1	1	1	Lagerplaat	Bearingplate	Plaque de palier	Lagerplatte
13	45.05.200	1			Klemstrip	Clamping strip	Barre de serrage	Klemmleiste 1500
	45.05.210		1		Klemstrip	Clamping strip	Barre de serrage	Klemmleiste 1900
	45.05.410			1	Klemstrip	Clamping strip	Barre de serrage	Klemmleiste 2300 ELVZ
14	45.05.232	9	11	13	Rubberflap	Rubbersheet	Protection en caoutchouc	Gummistreifen 174x174x8mm
15	45.05.380	1			Klemstrip	Clamping strip	Barre de serrage	Klemmleiste 1500 ELVZ
	45.05.390		1		Klemstrip	Clamping strip	Barre de serrage	Klemmleiste 1900 ELVZ
	45.05.400			1	Klemstrip	Clamping strip	Barre de serrage	Klemmleiste 2300 ELVZ
16	45.05.341	1			Rubberflap	Rubbersheet	Protection en caoutchouc	Gummistreifen 1600x400x9mm
	45.05.351		1		Rubberflap	Rubbersheet	Protection en caoutchouc	Gummistreifen 1960x400x9mm
	45.05.361			1	Rubberflap	Rubbersheet	Protection en caoutchouc	Gummistreifen 2320x400x9mm
17	45.05.866	1			Bumper	Bumper	Barre de protection	Stoßstange L=1610mm
	45.05.870		1		Bumper	Bumper	Barre de protection	Stoßstange L=1970mm
	45.05.873			1	Bumper	Bumper	Barre de protection	Stoßstange L=2330mm
18	45.10.400	1	1	1	V-snaar afschermkap	V-belt guard	Protection de courroie	KeilriemenSchutzblech
19	45.05.700	2	2	2	Slijtplaat	Wearing plate	Tôle d'usure	Sohle

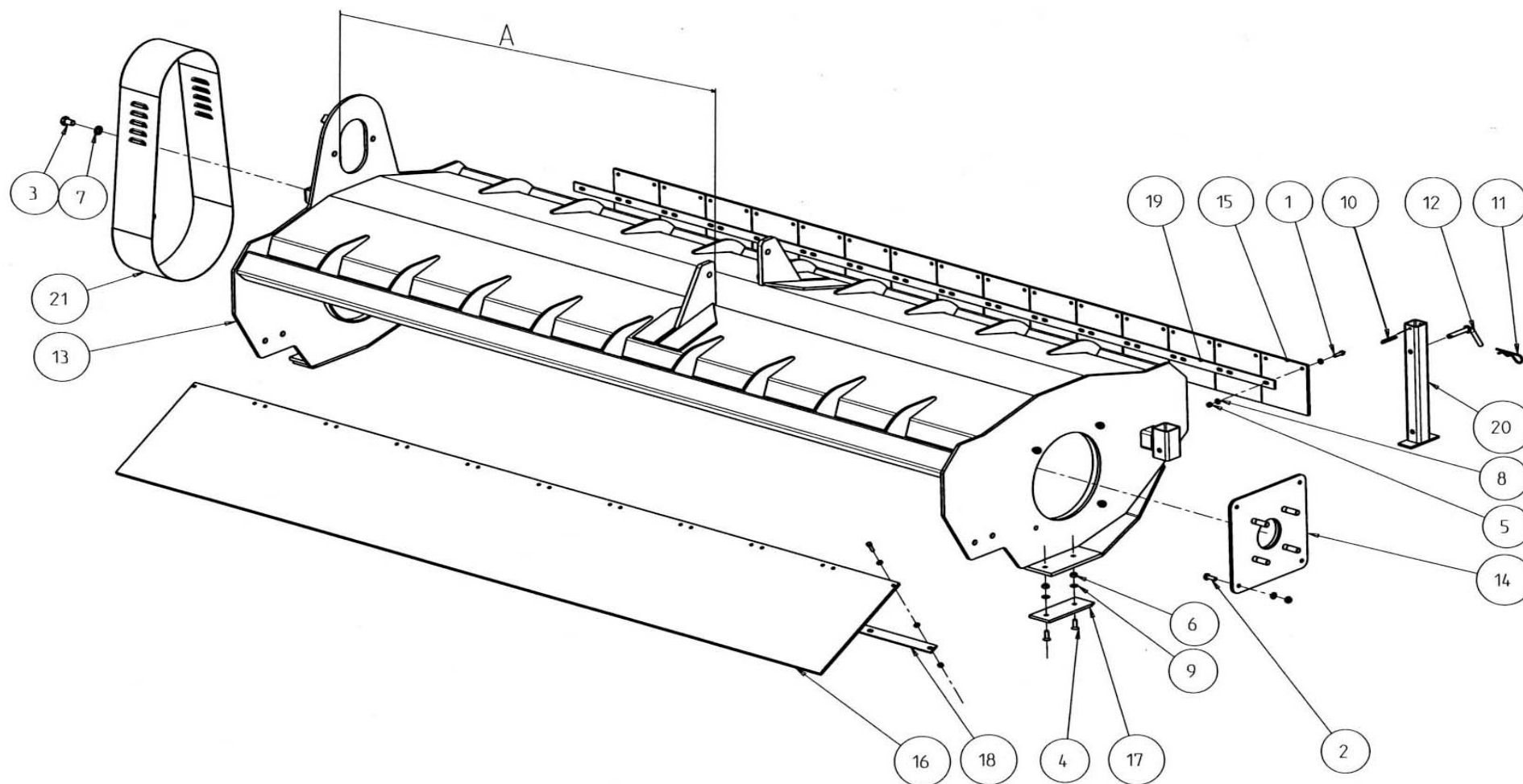
Vortex Roadmaster 06
2606-3006

Maaigedeelte

Cutting head

Carter de broyage

Mähergehäuse



Votex roadmaster 06

no.	onderdeel		Maaigedeelte		Cutting head	Carter de broyage	Mähergehäuse	technische info
	nummer	2606	3006	Omschrijving	Discription	Designation	Beschreibung	
1	10.02.092	50	58	Zeskanttapbout	Bolt	Vis	Sechskantschraube	M8x30-8.8
2	10.02.121	4	4	Zeskanttapbout	Bolt	Vis	Sechskantschraube	M10x30-8.8
3	10.02.203	1	1	Zeskanttapbout	Bolt	Vis	Sechskantschraube	M16x25-8.8
4	10.29.121	4	4	Verzonken schroef	Socket screw	Vis á tête fraisée	Senkschraube	M10x30
5	11.05.008	50	58	Borgmoer	Lock nut	Écrou autofreiné	Sicherungsmutter	M8
6	11.05.010	8	8	Borgmoer	Lock nut	Écrou autofreiné	Sicherungsmutter	M10
7	12.01.016	1	1	Veerring	Spring washer	Rondelle grower	Federring	M16
8	12.11.008	100	116	Sluitring	Washer	Rondelle	Unterlegscheibe	M8
9	12.11.010	8	8	Sluitring	Washer	Rondelle	Unterlegscheibe	M10
10	14.10.060	1	1	Spanstift	Clamping bush	Goupille elastique	Spannstifte	6x60
11	20.01.029	1	1	Borgveer dubbel	Gripclip double	Goupille beta double	Federstecker doppelt	4mm
12	43.05.120	1	1	Vergrendelpen	Locking pin	Axe de verouillage	Bolzen	
13	45.01.560	1		Maaigedeelte	Cutting head	Carter de broyage	Mähergehäuse	A=1465mm
	45.01.666		1	Maaigedeelte	Cutting head	Carter de broyage	Mähergehäuse	A=1465mm
	45.01.700		1	Maaigedeelte	Cutting head	Carter de broyage	Mähergehäuse	A=1630mm
14	45.04.220	1	1	Lagerplaat	Bearingplate	Plaque de palier	Lagerplatte	
15	45.05.232	15	17	Rubberflap	Rubbersheet	Protection en caoutchouc	Gummistreifen	174x174x8mm
16	45.05.364	1		Rubberflap	Rubbersheet	Protection en caoutchouc	Gummistreifen	2680x400x9mm
	45.05.367		1	Rubberflap	Rubbersheet	Protection en caoutchouc	Gummistreifen	3040x400x9mm
17	45.05.700	2	2	Slijtplaat	Wearing plate	Tôle d'usure	Sohle	
18	45.05.753	1		Klemstrip	Clamping strip	Barre de serrage	Klemmleiste	2600
	45.05.763		1	Klemstrip	Clamping strip	Barre de serrage	Klemmleiste	3000
19	45.05.756	1		Klemstrip	Clamping strip	Barre de serrage	Klemmleiste	2600
	45.05.766		1	Klemstrip	Clamping strip	Barre de serrage	Klemmleiste	3000
20	45.08.780	1	1	Steunpoot	Parking leg	Béquille	Stütze	
21	45.10.411	1	1	V-snaar afschermkap	V-belt guard	Protection de courroie	KeilriemenSchutzblech	

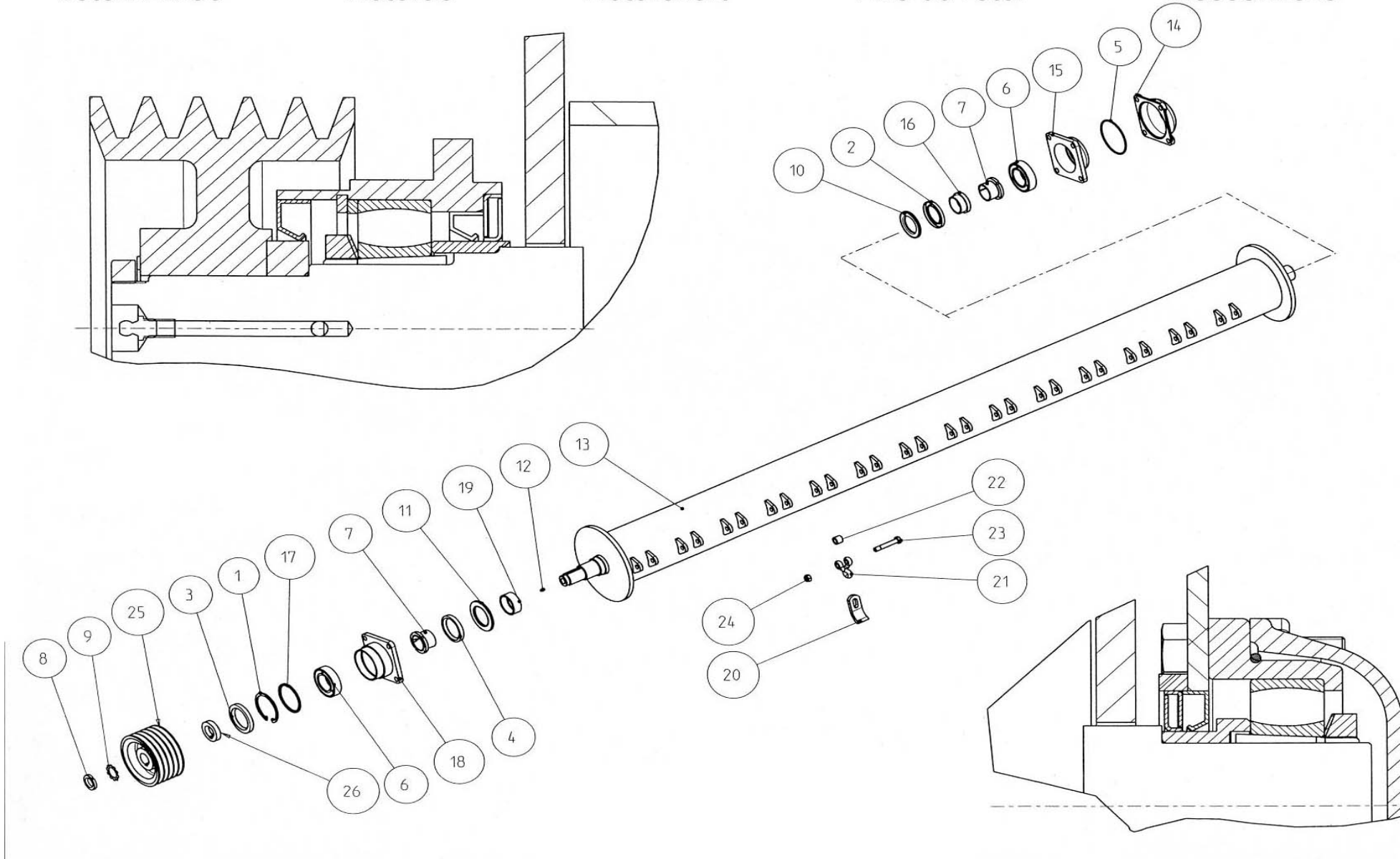
Vortex RM06

Rotoras

Rotorshaft

Axe du rotor

Messerwelle



Votex roadmaster 06

no.	onderdeel		type				Rotoras	Rotor shaft	Axe du rotor	Messerwelle	technische info
	nummer	1506	1906	2306	2606	3006	Omschrijving	Discription	Designation	Beschreibung	
1	12.31.110	1	1	1	1	1	Zekeringsring	Circlip	Circlip	Sicherungsringe	110x4
2	17.01.021	1	1	1	1	1	Keerring	Seal ring	Joint d'étanchéité	Simmerring	65x100x10
3	17.01.022	1	1	1	1	1	Keerring	Seal ring	Joint d'étanchéité	Simmerring	75x110x12
4	17.01.053					1	Keerring	Seal ring	Joint d'étanchéité	Simmerring	75x100x13
	17.01.021	1	1	1			Keerring	Seal ring	Joint d'étanchéité	Simmerring	65x100x10
5	17.02.009	1	1	1	1	1	O-ring	O-ring	Joint torique	O-ring	134x4
6	18.08.003	2	2	2			Kogellager	Ball bearing	Roulement à billes	Kugellager	2212EKTN9
	18.09.003				2	2	Tonlager	Spherical roller bearing	Roulement à tonneau	Sphere rol lager	22212 EK
7	18.50.001	2	2	2	2	2	Trekbus	Clamping sleeve	Bague conique	Spannhüls	H312
8	18.51.008	1	1	1	1	1	Borgmoer	Lock nut	Écrou frein	Sicherungsmutter	KM-8
9	18.52.008	1	1	1	1	1	Borgring	Lock ring	Rondelle de blocage	Sicherungsring	MB-8
10	18.53.013	1	1	1	1	1	Labyrinth ring	Labyrinth ring	Joint labyrinth	Labyrinth ring	Z-013
11	18.53.013	1	1	1			Labyrinth ring	Labyrinth ring	Joint labyrinth	Labyrinth ring	Z-013
	18.53.015				1	1	Labyrinth ring	Labyrinth ring	Joint labyrinth	Labyrinth ring	Z-015
12	20.03.003	2	2	2	2	2	Smeernippel	Grease nipple	Graisseur	Schmiernippel	M8x1.25-180°
13	45.02.406	1					Rotoras kpl. m. klepels	Rotorshaft cpl.w.flails	Rotor cpl.avec fléaux	Messerwelle mit schlegel	
	45.02.286		1				Rotoras kpl. m. klepels	Rotorshaft cpl.w.flails	Rotor cpl.avec fléaux	Messerwelle mit schlegel	RM 1907
	45.02.556			1			Rotoras kpl. m. klepels	Rotorshaft cpl.w.flails	Rotor cpl.avec fléaux	Messerwelle mit schlegel	2306 40x12
	45.02.306				1		Rotoras kpl. m. klepels	Rotorshaft cpl.w.flails	Rotor cpl.avec fléaux	Messerwelle mit schlegel	
	45.02.346					1	Rotoras kpl. m. klepels	Rotorshaft cpl.w.flails	Rotor cpl.avec fléaux	Messerwelle mit schlegel	
14	45.04.070	1	1	1	1	1	Lagerdeksel	Bearing cover	Couvercle de palier	Lagerdeckel	
15	45.04.090	1	1	1	1	1	Lagerhuis	Bearing house	Palier à roulement	Lagergehäuse	
16	45.04.100	1	1	1	1	1	Afstandsbus	Distance bush	Bague d'entretoise	Distanzbüchse	
17	45.04.120	1	1	1	1	1	Afstandsring	Distance ring	Rondelle d'entretoise	Distanzring	
18	45.04.140	1	1	1			Lagerhuis	Bearing house	Palier à roulement	Lagergehäuse	
	45.04.263				1	1	Lagerhuis	Bearing house	Palier à roulement	Lagergehäuse	
19	45.39.020				1	1	Afstandsbus	Distance bush	Bague d'entretoise	Distanzbüchse	
20	45.03.190	48	60	72	84	96	Klepel	Flail	Fléau	Schlegelmesser	40x12
21	45.03.200	48	60	72	84	96	Klepelbeugel	Flail bow	Manille	Schlegelmesserbügel	
22	45.03.210	48	60	72	84	96	Afstandsbus	Distance bush	Bague d'entretoise	Distanzbüchse	
23	45.03.220	48	60	72	84	96	Zeskantbout	Bolt	Vis	Sechskantschraube	M14x88/20-12.9
24	11.05.014	48	60	72	84	96	Borgmoer	Lock nut	Écrou autofreiné	Sicherungsmutter	M14
25	36.01.320	1	1	1			V-snaarschijf	V-belt pulley	Poulie à gorges	Keilriemenscheibe	150SPA5
	36.01.814				1	1	V-snaarschijf	V-belt pulley	Poulie à gorges	Keilriemenscheibe	300SPB5
26	45.09.350	1	1	1			Vulschijf	Disc	Disque	Scheibe	

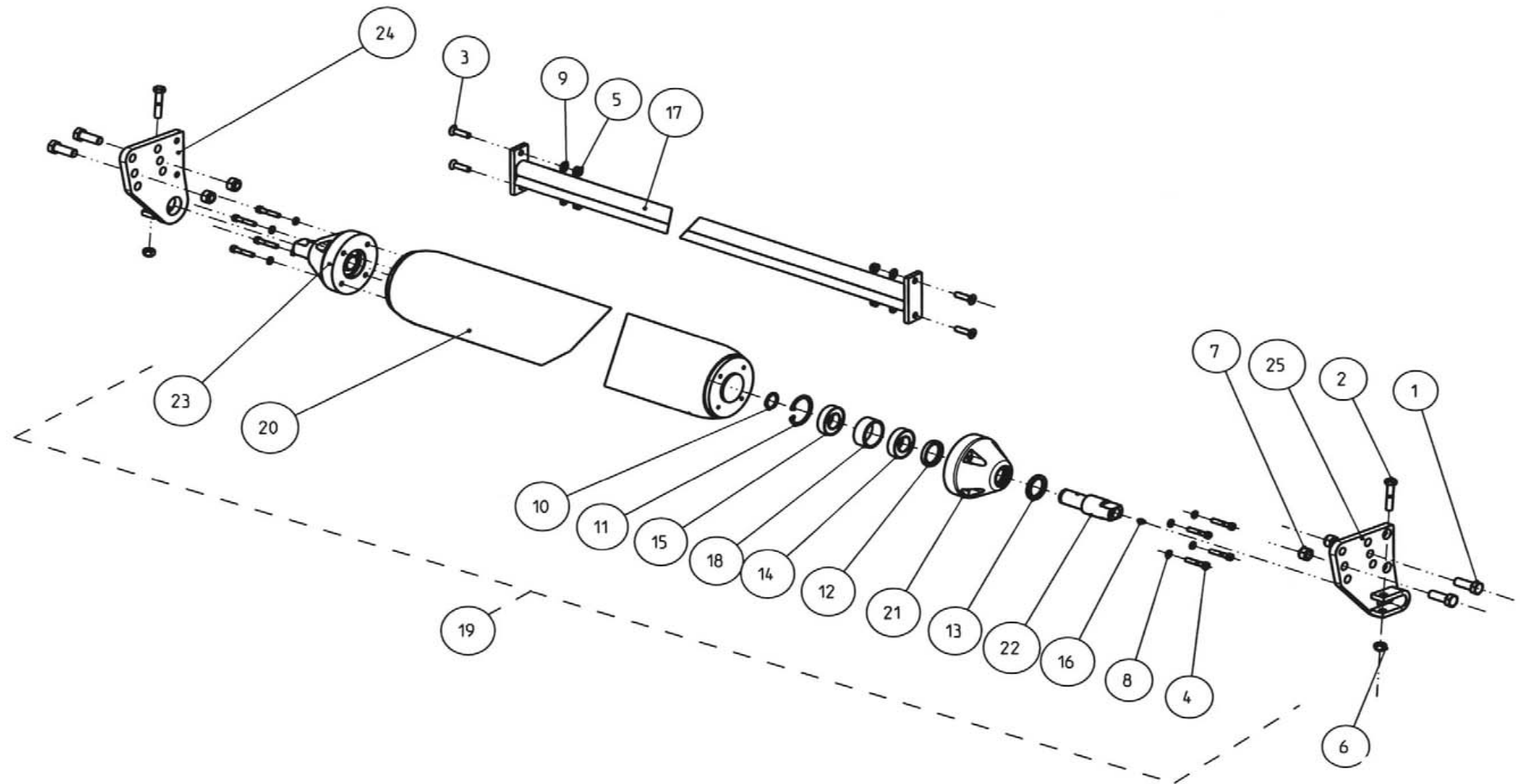
Votex Roadmaster 06

Looprol

Roller

Rouleau

Laufrolle



Votex roadmaster 06

no.	onderdeel nummer	Looprol					Omschrijving	Roller Discription	Rouleau Designation	Laufrolle Beschreibung	technische info
		1506	1906	2306	2606	3006					
1-25	45.05.015	1					Looprol set cpl.	Roller set cpl.	Ens. rouleau+fixations	Laufwalze satz kpl.	L=1610/D159
	45.05.016		1				Looprol set cpl.	Roller set cpl.	Ens. rouleau+fixations	Laufwalze satz kpl.	L=1970/D159
	45.05.017			1			Looprol set cpl.	Roller set cpl.	Ens. rouleau+fixations	Laufwalze satz kpl.	L=2330/D159
	45.05.018				1		Looprol set cpl.	Roller set cpl.	Ens. rouleau+fixations	Laufwalze satz kpl.	L=2690/D159
	45.05.019					1	Looprol set cpl.	Roller set cpl.	Ens. rouleau+fixations	Laufwalze satz kpl.	L=3050/D159
1	10.02.207	4	4	4	4	4	Zeskanttapbout	Bolt	Vis	Sechskantschraube	M16X45-8.8
2	10.02.158	2	2	2	2	2	Zeskanttapbout	Bolt	Vis	Sechskantschraube	M12x60-8.8
3	10.29.123	4	4	4	4	4	Verzonken schroef	Socket screw	Vis à tête fraisée	Senkschraube	M10x40
4	10.28.595	8	8	8	8	8	Cilinderkopschroef	Cilinderheadscrew	Vis à tête cilindrique	Zylinderkopfschraube	M8x45-12.9
5	11.05.010	4	4	4	4	4	Borgmoer	Lock nut	Écrou autofreiné	Sicherungsmutter	M10
6	11.05.012	2	2	2	2	2	Borgmoer	Lock nut	Écrou autofreiné	Sicherungsmutter	M12
7	11.05.016	4	4	4	4	4	Borgmoer	Lock nut	Écrou autofreiné	Sicherungsmutter	M16
8	12.01.008	8	8	8	8	8	Veerring	Spring washer	Rondelle grower	Federring	M8
9	12.11.010	4	4	4	4	4	Sluitring	Washer	Rondelle	Unterlegscheibe	M10
10	12.30.030	2	2	2	2	2	Zekeringsring	Circlip	Circlip	Sicherungsringe	30x1.5
11	12.31.062	2	2	2	2	2	Zekeringsring	Circlip	Circlip	Sicherungsringe	62x2
12	17.01.045	2	2	2	2	2	Keerring	Seal ring	Joint d'étanchéité	Simmerring	40x55x8
13	17.05.007	2	2	2	2	2	Viltring	Felt ring	Joint de feutre	Filzdichtung	
14	18.01.005	2	2	2	2	2	Kogellager	Ball bearing	Roulement à billes	Kugellager	6206
15	18.04.007	2	2	2	2	2	Kogellager	Ball bearing	Roulement à billes	Kugellager	6206-RS1
16	20.03.003	2	2	2	2	2	Smeernippel	Grease nipple	Graisneur	Schmiernippel	M8x1.25-180°
17	45.05.480	1					Schraper	Scraper	Racloire	Schürfleiste	L=1610
	45.05.490		1				Schraper	Scraper	Racloire	Schürfleiste	L=1970
	45.05.500			1			Schraper	Scraper	Racloire	Schürfleiste	L=2330
	45.05.900				1		Schraper	Scraper	Racloire	Schürfleiste	L=2690 verzaard
	45.05.856					1	Schraper	Scraper	Racloire	Schürfleiste	L=3050
18	45.05.650	2	2	2	2	2	Afstandsbus	Distance bush	Bague d'entretoise	Distanzbüchse	
19	45.05.703	1					Looprol cpl.	Roller cpl.	Rouleau cpl.	Laufwalze kpl.	L=1610
	45.05.710		1				Looprol cpl.	Roller cpl.	Rouleau cpl.	Laufwalze kpl.	L=1970
	45.05.716			1			Looprol cpl.	Roller cpl.	Rouleau cpl.	Laufwalze kpl.	L=2330
	45.05.723				1		Looprol cpl.	Roller cpl.	Rouleau cpl.	Laufwalze kpl.	L=2690
	45.05.860					1	Looprol cpl.	Roller cpl.	Rouleau cpl.	Laufwalze kpl.	L=3050

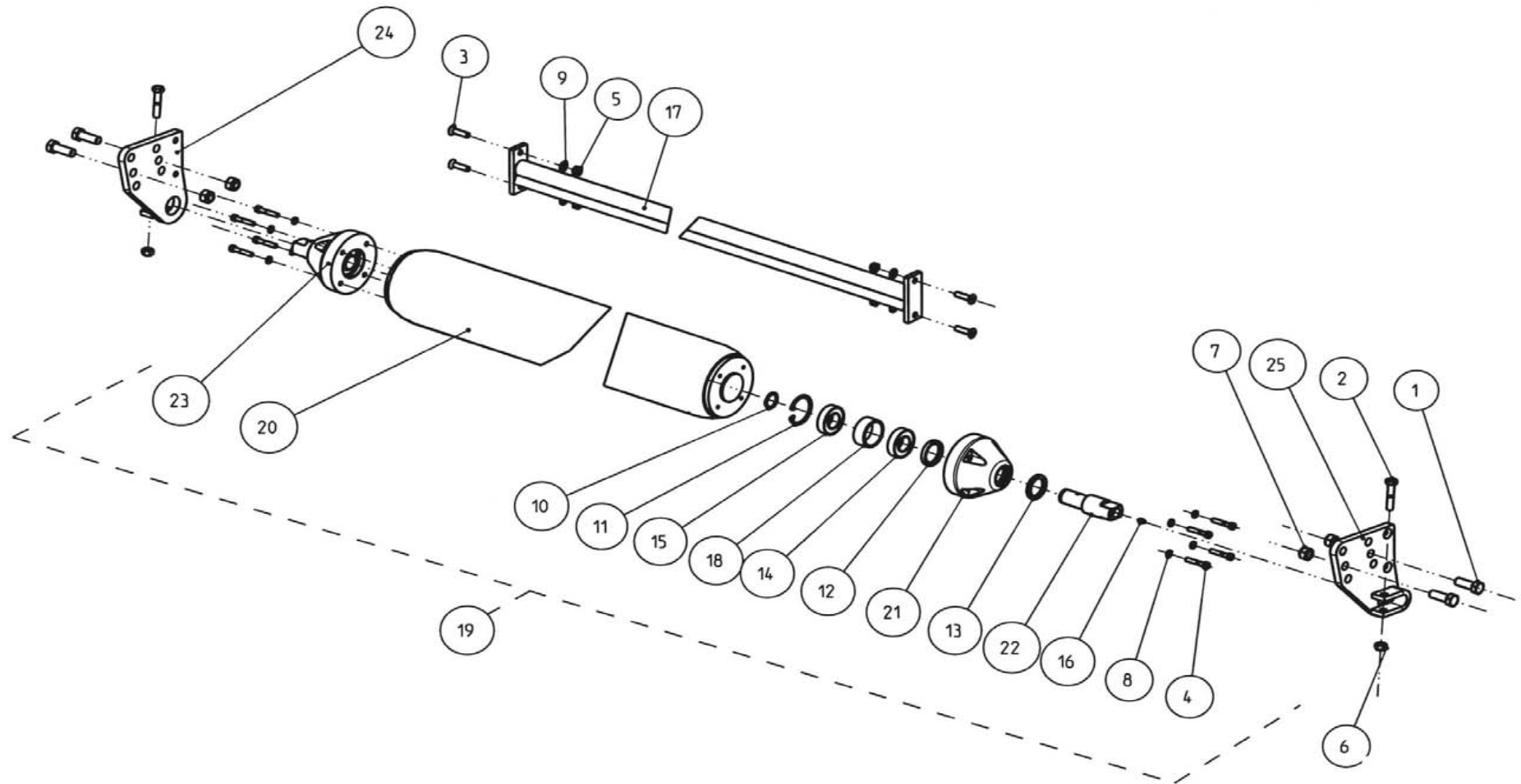
Votex Roadmaster 06

Looprol

Roller

Rouleau

Laufrolle



Votex roadmaster 06

no.	onderdeel nummer	Looprol					Omschrijving	Roller Discription	Rouleau Designation	Laufrolle Beschreibung	technische info
		1506	1906	2306	2606	3006					
20	45.05.706	1					Looprolbuis	Roller tube	Tube de rouleau	Laufwalze rohr	159/1392
	45.05.713		1				Looprolbuis	Roller tube	Tube de rouleau	Laufwalze rohr	159/1752
	45.05.720			1			Looprolbuis	Roller tube	Tube de rouleau	Laufwalze rohr	159/2112
	45.05.726				1		Looprolbuis	Roller tube	Tube de rouleau	Laufwalze rohr	159/2472
	45.05.760					1	Looprolbuis	Roller tube	Tube de rouleau	Laufwalze rohr	159/2832
21	45.05.733	2	2	2	2	2	Looprolprop	Roller plug	Cône à roulements	Laufwalzefropfenn	
22	45.05.736	2	2	2	2	2	Looprolas	Roller shaft	Arbre	Laufwalze welle	
23	45.05.740	2	2	2	2	2	Looprolprop cpl.	Roller plug cpl.	Cône à roulements cpl.	Laufwalzefropfenn kpl.	
24	45.05.744	1	1	1			Looprolhouder links	Roller support left	Support de rouleau gauche	Laufwalzestutz links	
	45.05.773				1	1	Looprolhouder links	Roller support left	Support de rouleau gauche	Laufwalzestutz links	
25	45.05.747	1	1	1			Looprolhouder rechts	Roller support right	Support de rouleau droite	Laufwalzestutz rechts	
	45.05.770				1	1	Looprolhouder rechts	Roller support right	Support de rouleau droite	Laufwalzestutz rechts	

Votex Roadmaster 06

Opties Options Options Options

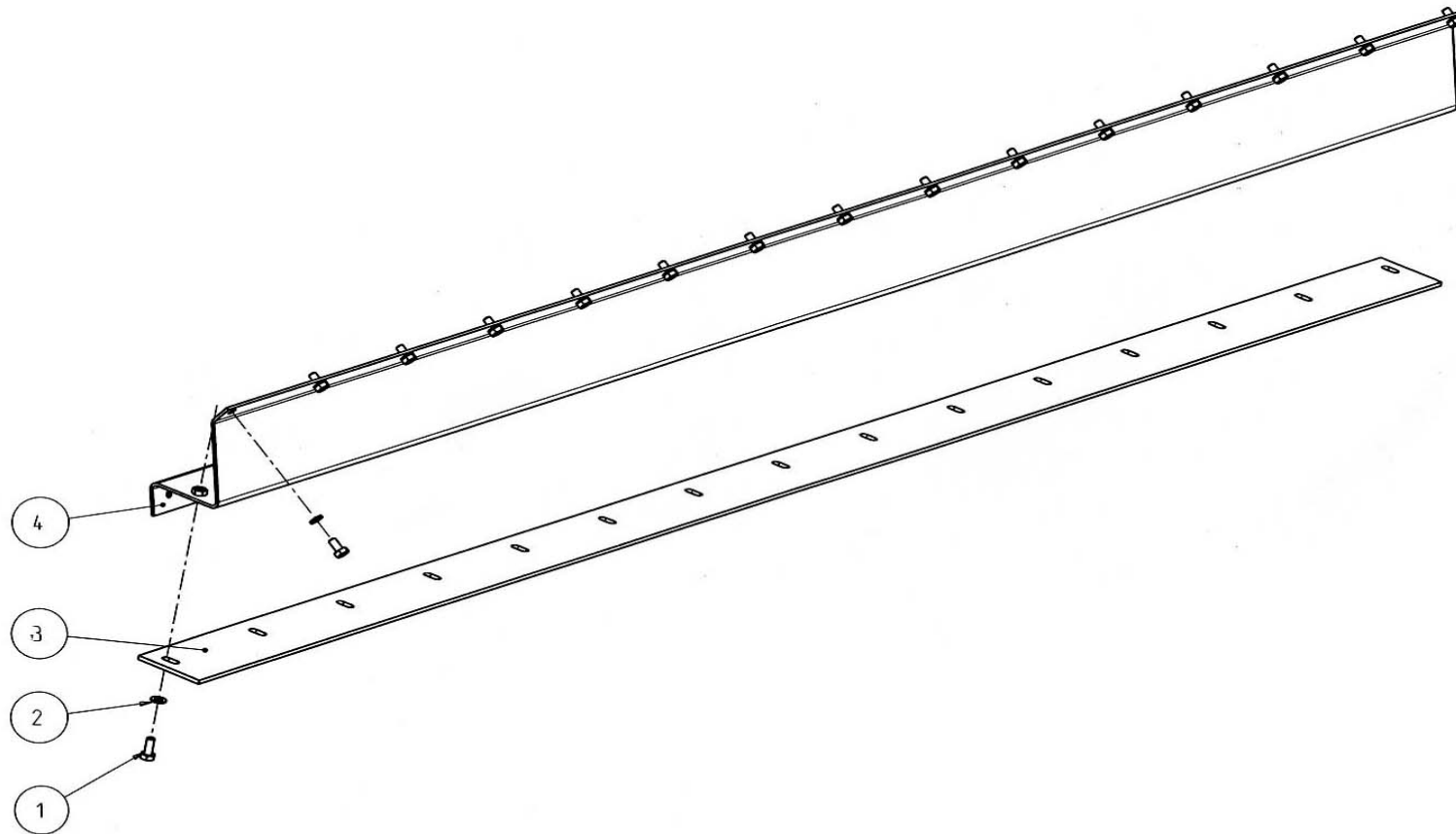
Votex Roadmaster 06

Verhakselstrip

Chopping strip

Contre-lame

Führungsstrebe



Votex roadmaster 06

no.	<u>onderdeel</u> nummer						Verhakselstrip	Chopping strip	Contre lame	Führungsstrebe	<u>technische info</u>
		<u>1506</u>	<u>1906</u>	<u>2306</u>	<u>2606</u>	<u>3006</u>	<u>Omschrijving</u>	<u>Discription</u>	<u>Designation</u>	<u>Beschreibung</u>	
1	10.02.121	18	22	26	30	34	Zeskanttapbout	Bolt	Vis	Sechskantschraube	M10x30-8.8
2	12.11.010	18	22	26	30	34	Sluitring	Washer	Rondelle	Unterlegscheibe	M10
3	45.13.110	1					Verhakselstrip	Chopping strip	Contre lame	Führungsstrebe	
	45.13.120		1				Verhakselstrip	Chopping strip	Contre lame	Führungsstrebe	
	45.13.140			1			Verhakselstrip	Chopping strip	Contre lame	Führungsstrebe	
	45.13.150				1		Verhakselstrip	Chopping strip	Contre lame	Führungsstrebe	
	45.13.160					1	Verhakselstrip	Chopping strip	Contre lame	Führungsstrebe	
4	45.13.180	1					Steunplaat	Support	Support	Stütze	
	45.13.190		1				Steunplaat	Support	Support	Stütze	
	45.13.200			1			Steunplaat	Support	Support	Stütze	
	45.13.210				1		Steunplaat	Support	Support	Stütze	
	45.13.220					1	Steunplaat	Support	Support	Stütze	

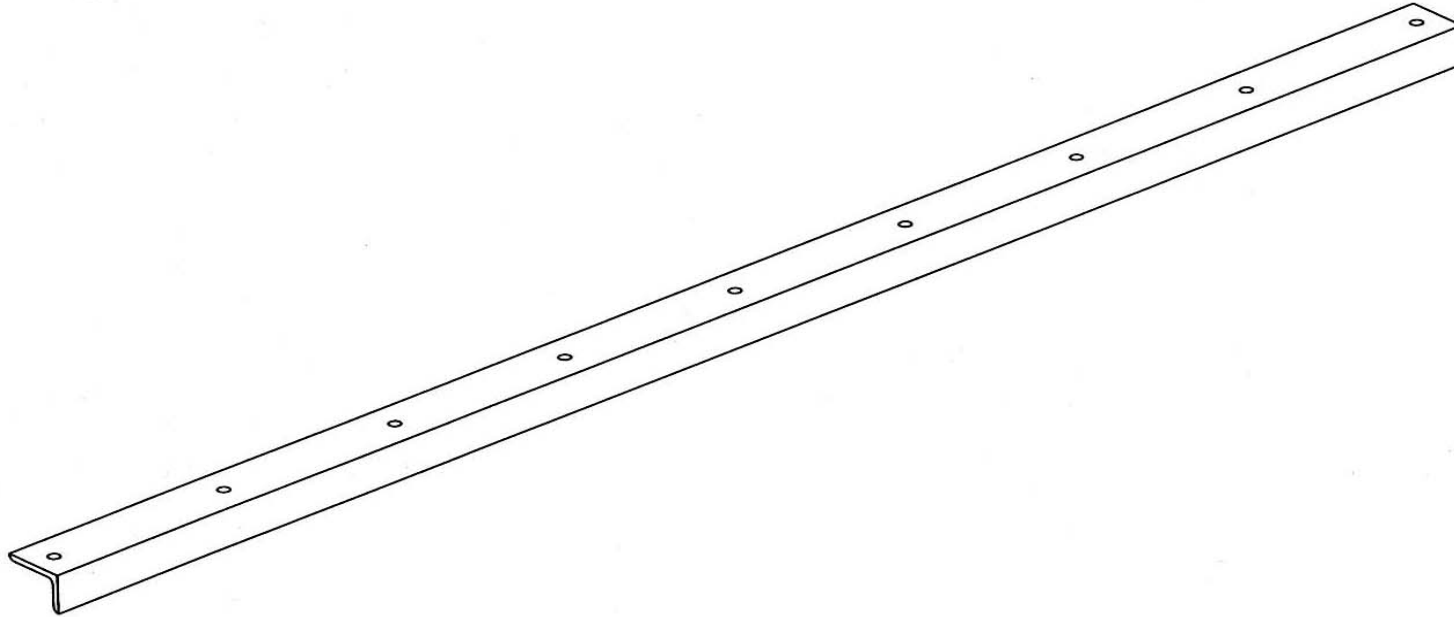
Votex Roadmaster 06

Hakselstrip

Chopping strip

Contre lame

Führungsstrebe



Votex roadmaster 06

Hakselhoeklijn

Chopping strip

Contre lame

Führungsstrebe

no.	<u>onderdeel nummer</u>	<u>type</u>					<u>Omschrijving</u>	<u>Discription</u>	<u>Designation</u>	<u>Beschreibung</u>	<u>technische info</u>
		<u>1506</u>	<u>1906</u>	<u>2306</u>	<u>2606</u>	<u>3006</u>					
1	45.13.246	1				Hakselhoeklijn	Chopping strip	Contre lame	Führungsstrebe	1500	
	45.13.250		1			Hakselhoeklijn	Chopping strip	Contre lame	Führungsstrebe	1900	
	45.13.253			1		Hakselhoeklijn	Chopping strip	Contre lame	Führungsstrebe	2300	
	45.13.256				1	Hakselhoeklijn	Chopping strip	Contre lame	Führungsstrebe	2600	
	45.13.260					1 Hakselhoeklijn	Chopping strip	Contre lame	Führungsstrebe	3000	

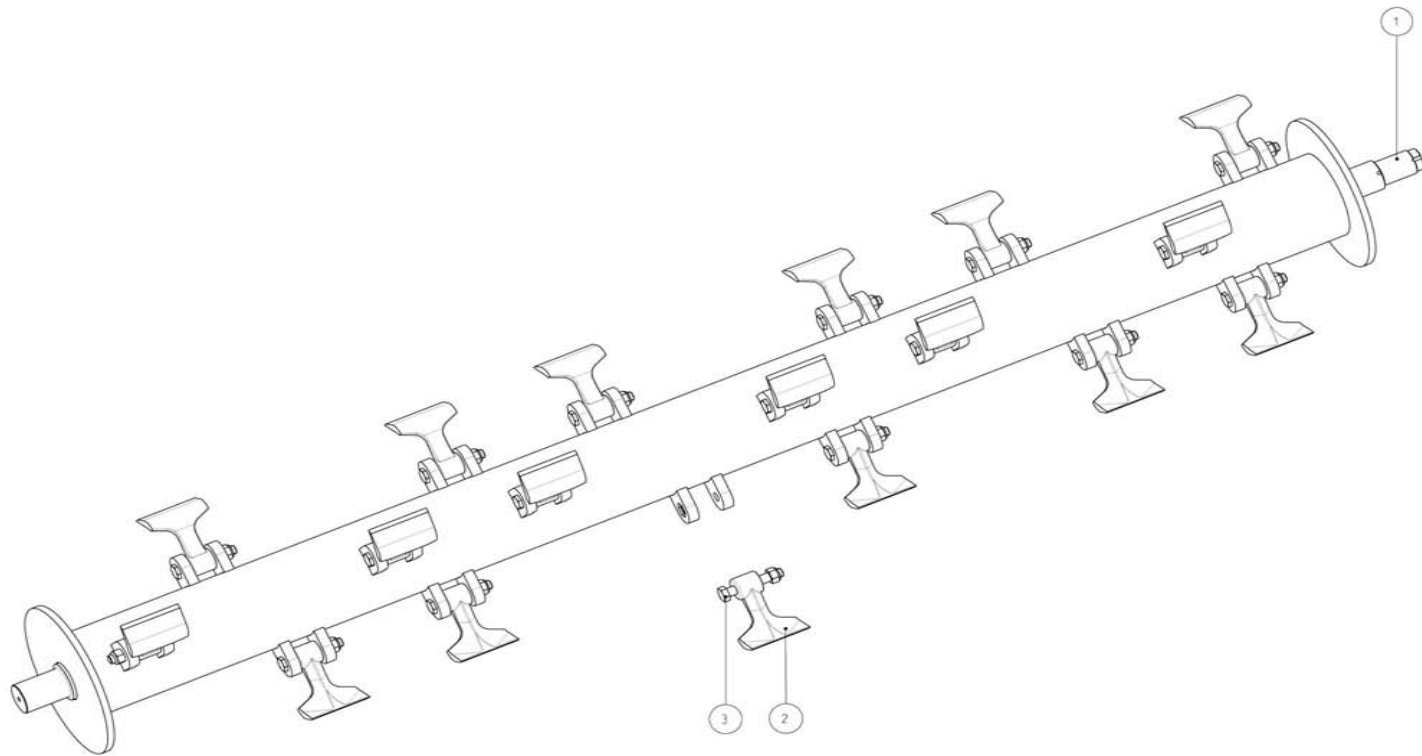
Votex Roadmaster 06

Rotoras 1.3 kg

Rotor shaft 1.3 kg

Rotor 1.3 kg

Rotorwelle 1.3 kg



Votex roadmaster 06

no.	<u>onderdeel</u>		<u>type</u>		Rotoras	Rotor shaft	Axe du rotor	Messerwelle	<u>technische info</u>
	<u>nummer</u>	<u>1506</u>	<u>1906</u>	<u>2306</u>	<u>Omschrijving</u>	<u>Discription</u>	<u>Designation</u>	<u>Beschreibung</u>	
1	45.02.405	1			Rotoras kpl. m. klepels	Rotorshaft cpl.w.flails	Rotor cpl.avec fléaux	Messerwelle mit schlegel	1506 1.3 kg
	45.02.287		1		Rotoras kpl. m. klepels	Rotorshaft cpl.w.flails	Rotor cpl.avec fléaux	Messerwelle mit schlegel	1906 1.3kg
	45.02.555			1	Rotoras kpl. m. klepels	Rotorshaft cpl.w.flails	Rotor cpl.avec fléaux	Messerwelle mit schlegel	2306 1.3 kg
2	45.03.260	16	20	24	Klepel	Flail	Fléau	Schlegelmesser	1.3 kg
3	45.03.263	16	20	24	Klepelbout+moer	Flail bolt+nut	Vis de fléau+écrou	Schlegelschraube+Mutter	M16x100-10.9

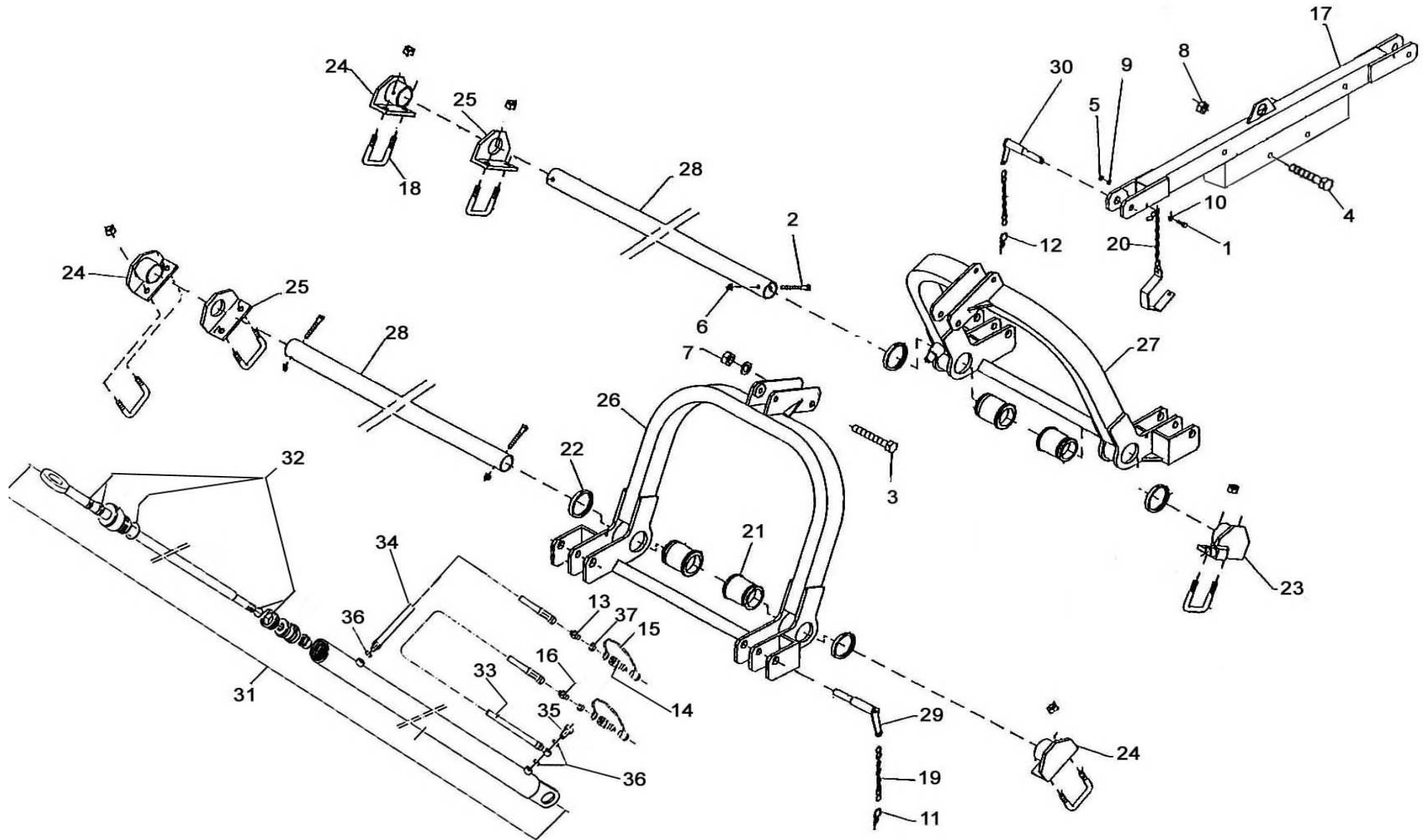
Votex roadmaster 06

Verstelbare
driepuntsbok

Three points linkage
adjustable

Attelage trois-points
réglable

Dreipunkt aufhängung
verstellbar



Votex roadmaster 06

			Verstelbare driepuntsbok	Three points linkage adjustable	Attelage 3-points reglable	Dreipunkt aufhängung verstellbar	
no.	<u>onderdeel nummer</u>	<u>aantal</u>	<u>Omschrijving</u>	<u>Discription</u>	<u>Designation</u>	<u>Beschreibung</u>	<u>technische info</u>
1	10.02.091	1	Zeskanttapbout	Bolt	Vis	Sechskantschraube	M8x25-8.8
2	10.04.164	4	Zeskantbout	Bolt	Vis	Sechskantschraube	M12x90-8.8
3	10.04.217	2	Zeskantbout	Bolt	Vis	Sechskantschraube	M16x110-8.8
4	10.04.268	2	Zeskantbout	Bolt	Vis	Sechskantschraube	M20x110-8.8
5	11.01.008	1	Zeskantmoer	Nut	Écrou	Mutter	M8
6	11.05.012	4	Borgmoer	Lock nut	Écrou autofreiné	Sicherungsmutter	M12
7	11.05.016	2	Borgmoer	Lock nut	Écrou autofreiné	Sicherungsmutter	M16
8	11.05.020	2	Borgmoer	Lock nut	Écrou autofreiné	Sicherungsmutter	M20
9	12.01.008	1	Veerring	Spring washer	Rondelle grower	Federring	M8
10	12.11.008	1	Sluitring	Washer	Rondelle	Unterlegscheibe	M8
11	20.01.007	2	Borgveer dubbel	Gripclip double	Goupille beta double	Federstecker doppelt	5mm
12	20.01.029	1	Borgveer dubbel	Gripclip double	Goupille beta double	Federstecker doppelt	4mm
13	26.10.002	1	Verloopnippel	Reduction nipple	Racord de réduction	Reduktionsnippel	3/8-1/2"BSP"
14	26.10.010	2	Snelkoppeling	Hydraulic coupling	Raccord rapide hydraulique	Kupplungsstecker	1/2BSP
15	26.10.244	2	Stofkap	Dust cap	Capuchon de protection	Staubkappe	1/2"rood
16	26.10.348	1	Nippel bewerkt	Nipple processed	Mamelon labourée	Doppelnippel bewerkt	3/8-1/2BSP 2mm
17	45.07.690	1	Framebuis	Frame tube	Tube de Châssis	Ramen rohr	
18	73.31.495	6	Strop	U bolt	Etrier	Klemmbügel	M16-8.8
19	73.31.516	2	Ketting cpl.	Chain cpl.	Chaîne cpl.	Kette kpl.	2.2x290mm
20	73.31.519	1	Kruiskoppelingsas houder	Drive shaft support	Support de cardan	Gelenkwellehalter	
21	73.31.585	4	Kunststofbus	Bush plastic	Bague plastique	Büchse kunststof	M80x100
22	73.31.588	4	Moer	Nut	Écrou	Mutter	M80
23	73.31.597	1	Steun	Support	Support	Stütze	
24	73.31.600	3	Steun	Support	Support	Stütze	

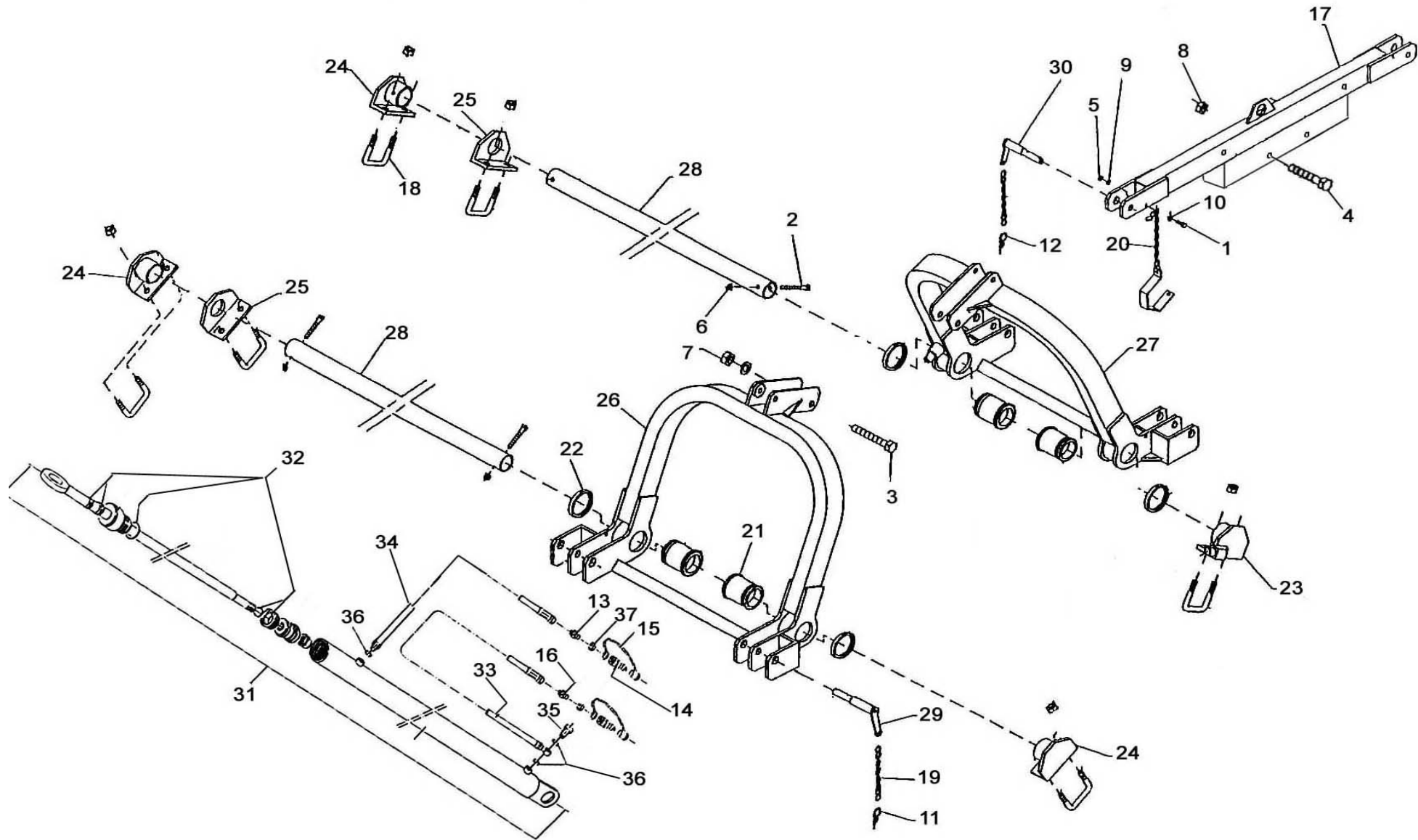
Votex roadmaster 06

Verstelbare
driepuntsbok

Three points linkage
adjustable

Attelage trois-points
réglable

Dreipunkt aufhängung
verstellbar



Votex roadmaster 06

			Verstelbare driepuntsbok	Three points linkage adjustable	Attelage 3-points reglable	Dreipunkt afhanging verstellbar	
no.	<u>onderdeel nummer</u>	<u>aantal</u>	<u>Omschrijving</u>	<u>Discription</u>	<u>Designation</u>	<u>Beschreibung</u>	<u>Technische info</u>
25	73.31.603	2	Steun	Support	Support	Stütze	
26	73.31.636	1	Driepuntsframe	Three points linkage	Attelage trois points	Dreipunkt Aufhängung	
27	73.31.639	1	Driepuntsframe	Three points linkage	Attelage trois points	Dreipunkt Aufhängung	
28	73.31.645	2	Geleidebuis	Guiding tube	Tube de guidage	Geleite rohr	GU bok kat. 2-3
29	73.31.648	2	Werktuigpen	Link pin	Broche	Lenker bolzen	Kat. 2-3
30	45.07.720	1	Topstangpen	Top link pin	Broche troisième point	Bolzen	
31	73.32.212	1	Schuifcilinderset	Side shift cilinder set	Verin de deport lateral cpl.	Hydraulikcilinder kpl.	GU 225-300 kat 2-3
32	73.32.197	1	Afdichtingsset	Seal set	Jeu de joints	Dichtungssatz	
33	73.32.203	1	Hydrauliekslang	Hydraulic hose	Tuyau hydraulique	Hydraulikschlauch	
34	73.32.206	1	Hydrauliekslang	Hydraulic hose	Tuyau hydraulique	Hydraulikschlauch	
35	74.02.270	1	Holbout	Banjo bolt	Vis creuse	Hohlschraube	
36	77.26.186	3	Usit ring	Seal ring	Rondelle joint	Dichtungsring	3/8"
37	77.26.188	2	Usit ring	Seal ring	Rondelle joint	Dichtungsring	1/2"

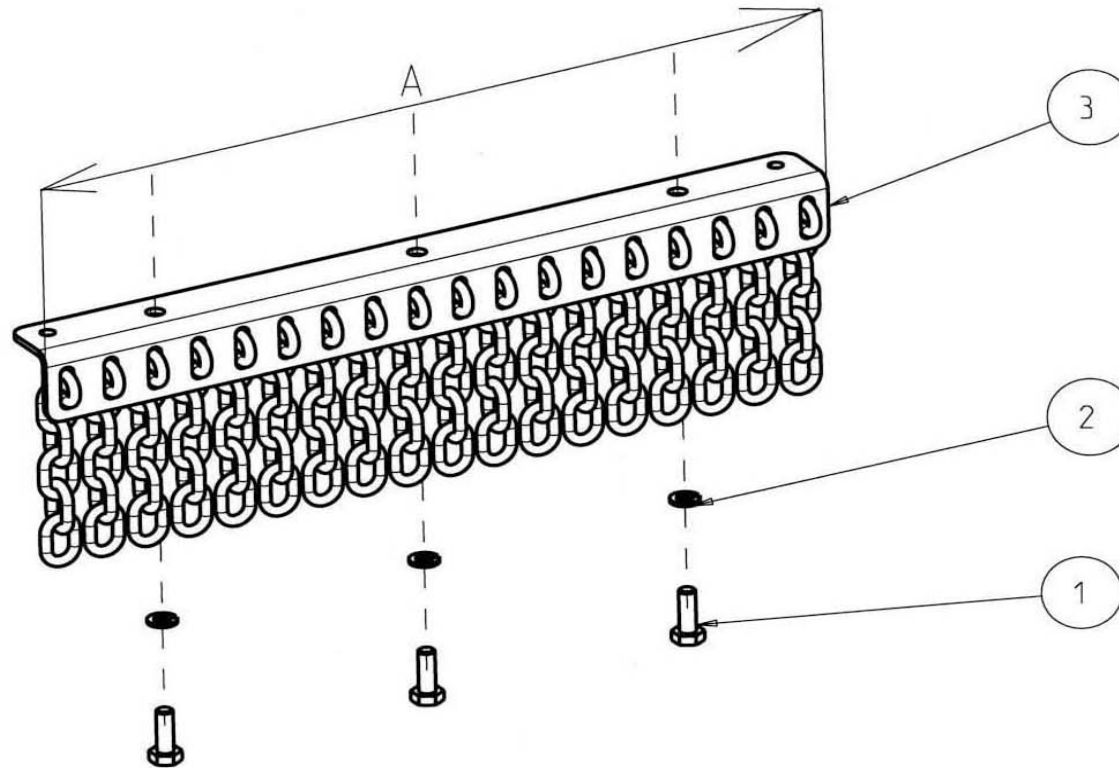
Votex

Kettingafscherming

Chain protection

Protection de chaîne

Kettenschutz



Votex Roadmaster 06**Kettingafscherming Chain protection Protection de chaine Kettenschutz**

<u>no.</u>	<u>onderdeel nummer</u>	<u>1506</u>	<u>1906</u>	<u>type</u>			<u>Omschrijving</u>	<u>Discription</u>	<u>Designation</u>	<u>Beschreibung</u>	<u>technische info</u>
				<u>2306</u>	<u>2606</u>	<u>3006</u>					
1	10.02.121	7	9	11	13	15	Zeskanttapbout	Bolt	Vis	Sechskantschraube	M10x30-8.8
2	12.01.010	7	9	11	13	15	Veerring	Spring washer	Rondelle grower	Federring	M10
3	45.05.940		1	1			Kettingafscherming	Chain protection	Protection de chaine	Kettenschutzblech	A=526mm
	45.05.943	1	2			3	Kettingafscherming	Chain protection	Protection de chaine	Kettenschutzblech	A=702mm
	45.05.946	1		2	3	1	Kettingafscherming	Chain protection	Protection de chaine	Kettenschutzblech	A=878mm